

Channel Islands Chapter of the California Native Plant Society,
serving Ventura and Santa Barbara Counties

Matilija Copy

Volume 22, Issue 1

Editors: David M. Brown & David L. Magney

Spring 2011



Contents

<u>Item</u>	<u>Page</u>
Chapter Events	1
Volunteer Survey	2
Conferences	4
www.cnpsci.org	4
Education	4
Rare Plants	5
Chapter Officers Contacts	6

HELP WANTED

The CNPS Channel Islands chapter needs your help. In this issue of the newsletter you will find a survey from our chapter volunteer coordinator Janet Takara. Janet has undertaken the task of helping to assemble a core of volunteers to advance our missions to educate the public about the value of California's native plants and conserve this globally important natural heritage that enriches all of our lives. If you have any interest in volunteering for the chapter please fill out this survey and mail it to Janet or send her an e-mail with your survey response.

We have several volunteer opportunities during California Native Plant Week, April 17-23.

Take a look at the offerings below and contact Janet at jntakara@yahoo.com if you are interested in volunteering or would like more information. As always, check the chapter website at <http://www.cnpsci.org/Calendar/Events.htm> for updated information.

The Ojai Valley Museum Annual Native Plant Sale

Saturday, April 16, 2011 from 10 a.m. to 2 p.m.

Ojai Valley Museum, 130 W. Ojai Ave., Ojai, CA 93023

OVM is hosting the plant sale. CNPS will have a table to sell books, talk about CNPS, and recruit new members. We still need a few people to round out the crew.

Native Plant Home Garden Tour

Also on Saturday, April 16, 2011 from 9:00 a.m. to 5:00 p.m.

Native gardens from Santa Barbara to Simi Valley will be open for touring.

Volunteers are needed to greet the public at home gardens where the occupants will not be available to host the visitors on that day. Contact Andrea Adams-Morden at aadamsmorden@yahoo.com or 805/684-8077 for info.

Spring Native Plant Sale

Saturday, April 23

Calleguas Municipal Water District, 2100 Olsen Rd., Thousand Oaks, CA 91360

We will hold the Spring plant sale at a new location in the Conejo Valley area this year.

Volunteers are needed on Saturday to help with set up, greet shoppers, share horticultural knowledge, sell books, and clean up. Come for all or part of the day. Creative people are needed now to help design plant signage and create attractive displays to show the beauty of native plants in the garden. Some ideas are decorative container plant and photographic displays.

Directions to the E.P. Foster

Library: from the North on US101 take Ventura Ave exit, go straight 2 blocks and turn Right onto Main St.; go 6 blocks East and turn Left onto Chestnut St. From South on US101 take the California St. exit; go 2 blocks and turn Right onto Main St. and turn Left onto Chestnut. Parking is located behind the library, and there is a rear entrance to the **Topping Room**, on the West side of the library. 651 E. Main St.

The Santa Barbara Botanic

Garden is located at 1212 Mission Canyon Dr. (many routes lead through Santa Barbara to Foothill Road/SR192). Mission Canyon Dr. is North of SR192.

VOLUNTEER SURVEY/APPLICATION 2011:**CNPS Channel Islands Chapter**

Please return this completed form via e-mail to jntakara@yahoo.com OR mail to CNPSCI, Attn.: Volunteer Coordinator, P.O. Box 6, Ojai, CA 93024-0006. THANK YOU!

Name:**Preferred contact method:**

e-mail Address:

Phone Number:

Mailing Address:

Other/Second Option:

Volunteer Areas Of Interest:

Please indicate all that you might be interested in.

Annual Events:

Native Plant Garden Tour (April)	Native Plant Landscape Symposium (February)
Fall Native Plant Sale	Spring Native Plant Sale
Other	

Outreach and Publicity:

Leading Field Trips	Plant Field Surveys
Represent CNPS at Public Outreach Events	Book Sales at Events
Share knowledge of native plant horticulture	Share knowledge of conservation issues.
Other	

Creative and Design:

Design information displays on horticulture or conservation	Design plant sale signs
Graphic Design of Brochures, Handouts, etc.	Photography
Writing Info Pieces for Handouts, Media Blurbs	Other

Support:

Researching Plant Information	Postal Mailings
Media Publicity Outreach	Other

Leadership and Coordinator Roles:

CNPSCI Board Position	Coordinating/Chairing a Special Event
Other	

Special skills you would like to offer:**Why are you interested in volunteering with CNPSCI?****List a few words that you would use to describe yourself:**

Are you a student? If so please note:

1) college, high school or other, where and graduation date:

2) Does the volunteer work fulfill an educational requirement and if so please give the details:

If you have volunteered before, either with CNPS or another place, describe:

1) What you liked most about your experience:

2) What you liked least about your experience:

Any other comments, ideas or suggestions:

SPRING PLANT SALE

Saturday 23 April 2011
10:00 AM to 3:00 PM

The Chapter holding its Spring Plant Sale for the first time in eastern Ventura County, at the Calleguas Municipal Water District headquarters between Thousand Oaks, Moorpark, and Simi Valley. Contact the chapter's volunteer Coordinator, Janet Takara, at jntakara@yahoo.com or 909/815-2519 to volunteer, or just to attend and purchase native plants for your garden. The plants for the Spring Native Plant Sale will be provided by Matilija Nursery. There with a nice selection of local native plants to choose from.

Directions: Parking lot at Calleguas Municipal Water District offices at 2100 East Olsen Road, Thousand Oaks, CA 91360. To get there, take the Olsen Road exit off State Route 23 and go east towards Simi Valley. The entrance to Calleguas Municipal Water District headquarters is on the Right a short distance east of the freeway.

Education

CNPS Board Member David Torfeh attended the 2010 California Invasive Plant Council Symposium held in Ventura, California. He has filed this report on the conference:

The 19th annual Cal-IPC Symposium on "Weeds & Wildlife: Impacts & Interactions" in Ventura was a huge success, with at least 100 people attending. Most attendees were involved in some aspect of habitat restoration. CNPS had a table there, along with other sponsors. Cal-IPC had a wide variety of speakers, even one from New Zealand. There was something for everyone.

Presentation topics during the first two days (October 14-15) included invasive plant mapping technologies, predicting invasion patterns, impacts of invasive plants on native vertebrates and invertebrates and vice versa, effects of grazing intensity on the success of natives vs. non-natives, risk assessment of herbicide use, use of solar tents to kill invasives, habitat restoration case studies (mostly in California and on the Channel Islands), wildlife protection during habitat restoration, backgrounds of the coalitions fighting invasives, and the histories behind *Arundo donax*, *Euphorbia terracina*, and French Broom.

The symposium was sponsored by restoration companies, non-profit organizations (such as the Bay Area Early Detection Network, California Native Grasslands Association, and the California Society for Ecological Restoration) and government agencies (including the National Park Service, California State Parks, California Department of Fish and Game, and the United States Forest Service).

On the third day of the Symposium (October 16), field trips to restoration sites and invasive plant study sites took place. There were three options: the Santa Clara River, the Santa Barbara area, or Santa Cruz Island. In sum, the Cal-IPC Symposium was vastly informative and very inspiring. The next one will be held at Lake Tahoe in 2011.

UPCOMING CHAPTER EVENTS

<p>Saturday 4/16/2011 9:00 AM - 5:00 PM</p>	<p>Garden Tour</p> <p>Santa Barbara and Ventura Counties</p>	<p>Native Plant Home Garden Tour The Channel Islands Chapter, in coordination with the Santa Barbara Botanic Garden, will put on its first tour of home gardens landscaped exclusively, or mostly, with California native plants. This self-guided tour allows access to see beautiful native plant gardens from Goleta, Santa Barbara, Montecito, Carpinteria, Ventura, Thousand Oaks, and more. Experiencing these beautiful native gardens first hand is a great opportunity to gain inspiration and learn about these amazing plants. Andrea Adams-Morden is coordinating the tour in coordination with the Santa Barbara Botanic Garden, who is handling the registration. Call the Heather Wehnau at the Garden at 805/682-4726, ext. 102 for more information. Be sure to state that you are a member of the California Native Plant Society. Cost: \$15 for CNPS members, \$25 for non-members.</p>
---	---	--

Welcome New Members: (since last newsletter)

Ben Armatrout-Wiswath
 Debra Belding-Hillman
 Linda Hague
 Cynthia Hartley
 Debra James
 Freda Massoro
 Arlene Pinkerton
 Janet Takara
 Dee Walsh

www.cnpsci.org

Be sure to visit the CNPS Channel Islands Chapter website regularly. It contains lots of interesting items of interest to CNPS members in the Ventura and Santa Barbara County areas. Just type in www.cnpsci.org on your web browser to see what is going on locally between issues of the newsletter. A lot of stuff comes up quickly, and it may be too late to include in the next newsletter of the **Matilija Copy**.

Also be sure to check out the main CNPS website, www.cnps.org for lots of resources on native plants, landscaping, conservation, education, etc.

Suggestions and comments about the chapter website are welcome. Send them to webmaster@cnpsci.org.

Meet a Local Rare Plant Celebrity

Baccharis plummerae A. Gray ssp. *plummerae* (Plummer's Baccharis) is a small, broad-leaved winter-deciduous shrub (<2 m tall) with fine-curved, hair-covered, wand-like stems and 20 to 45-mm, oblanceolate, toothed, 3-veined (prominent), sessile leaves. The inconspicuous flowers, generally blooming between August and October (California Native Plant Society's 2006 *Inventory of Rare and Endangered Plants of California*, 6th Edition), are arranged in paniculate heads with a bell-shaped involucre, and flower heads are either staminate (5-6.5 mm long) or pistillate (6-8.5 mm long). *B. plummerae* is a member of the Sunflower family (Asteraceae). (Hickman 1993, *The Jepson Manual: Higher Plants of California*)

Baccharis plummerae typically occurs on rocky, well-drained, north-facing slopes in Coastal Sage Scrub and oak woodland plant communities. It ranges from southern coastal Santa Barbara County to coastal Los Angeles County, and the Santa Cruz and Anacapa Islands, below 425 m in elevation (Hickman 1993, Skinner and Pavlik 1994). The Type-Locality (collection site from which it was formally described and named) for *B. plummerae* is in Glen Lock Ravine, on the south slope of the Santa Ynez Mountains, approximately 2.4 km west of Santa Barbara (Smith 1998, *A Flora of the Santa Barbara Region*).



Baccharis plummerae has been observed on predominantly north-facing slopes, and also occurs on moister south-facing slopes in shade of trees and large shrubs. *B. plummerae* inhabits Coastal Sage Scrub and is found as a scattered contributor to Coast Live Oak Series understory. The Plummer's Baccharis is on CNPS List 4 (Plants of Limited Distribution).

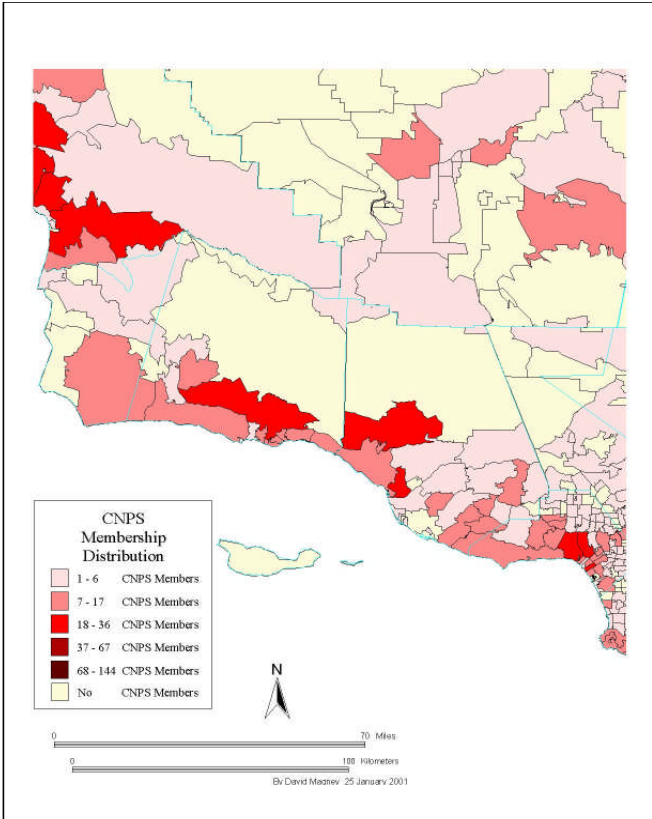
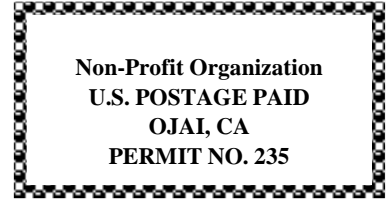
As part of David Magney's research on the flora of Ventura County, he has documented it at 27 locations (which include voucher specimens collected by others and deposited into one or more public herbaria). General locations it is known to occur within Ventura County include: Matilija Canyon, Santa Ynez Mountains, Wheeler Gorge, Nordhoff Ridge, Ojai Valley, Sulphur Mountain, Laguna Ridge, Rincon Creek, Rincon Coast, Ventura Hills, and Anacapa Islands. In Santa Barbara County, Clifton Smith documented it as occurring in the Santa Ynez Mountains, Oso Canyon, Miranda Pine Creek, and Santa Cruz Island. It is also known from western Los Angeles County (Santa Monica Mountains and Palos Verde Peninsula) and coastal San Luis Obispo County and along the lower Cuyama River.

We are starting a monitoring program for the local rare plant to make certain that the known populations of our rare plant are in good ecological health. In 2010, we focused on *Fritillaria ojaiensis* and *Navarettia ojaiensis* (the theme must be plants of Ojai), and the chapter is continuing monitoring for those species in 2011. We are also actively searching for undiscovered populations in order to get a comprehensive understanding of their ranges. We will also be searching for historic occurrences of other rare species, including *B. plummerae*. One occurrence of *B. plummerae* is quiet accessible, right along State Route 33 just north of the Ojai/Schmidt Quarry, on the right side of the road. Stop and see if you can find it.

If you are interested in joining our monitoring efforts for this and other rare plants in our area please contact Conservation Chair David Brown at conservation@cnpsci.org.

California Native Plant Society
P.O. Box 6
Ojai, CA 93024

www.cnpsci.org



TIME VALUE MATERIAL

Channel Islands Chapter Officers/Program Contacts

Office/Position	Name	Phone #	Email Address
*President:	David Magney	646-6045	president@cnpsci.org
*Vice President:	Lynne Kada	643-4842	lynnekada@gmail.com
*Secretary:	<i>Your Name Could Be Here</i>		
*Treasurer:	Stuart Bloom	652-2244	treasurer@cnpsci.org
*Conservation:	David Brown	987-2534	conservation@cnpsci.org
*Education:	Andrea Adams-Morden	684-8077	aadamsmorden@yahoo.com
*Horticulture:	Patt McDaniel	646-9948	mcins@west.net
*Legislation:	<i>Your Name Could Be Here</i>		
*Rare Plants:	David Magney	646-6045	president@cnpsci.org
Membership:	Sarah Chaney		tiarella@sbcglobal.net
Newsletter Editor:	David Brown & David Magney	646-6045	editor@cnpsci.org
*Vegetation:	David Magney	646-6045	president@cnpsci.org
Webmaster:	David Magney	646-6045	webmaster@cnpsci.org
Invasive Exotics:	Andrea Adams-Morden	684-8077	aadamsmorden@yahoo.com
Programs:	<i>Your Name Could Be Here</i>		
Volunteer Coordinator:	Janet Takara	909/815-2519	jntakara@yahoo.com
Program Facilitator (V):	Richard Bradley	646-6633	
Publicity:	<i>Your Name Could Be Here</i>		
Field Trips:	<i>Your Name Could Be Here</i>		
Plant Sales:	<i>Your Name Could Be Here</i>		
Poster Sales:	<i>Your Name Could Be Here</i>		
*Member-At-Large	Andrea Adams-Morden	684-8077	aadamsmorden@yahoo.com
*Member-At-Large	David Torfet		gjh32@sbcglobal.net
*Member-At-Large	Pat Jump		patjump@hotmail.com

(All telephone numbers are in Area Code 805, unless otherwise indicated)

* = officer (voting)

CNPS Membership Application

Category	Annual Amount
Individual	\$ 45
Family	\$ 75
Nonprofit Group/Organization	\$ 75
Library	\$ 75
Business Group/Firm	\$500
Plant Lover	\$100
Patron	\$300
Benefactor	\$600
Mariposa Lily.....	\$1500
Student	\$ 25
Limited Income	\$ 25

I wish to affiliate with the Channel Islands Chapter of the California Native Plant Society.

Name _____
 Address _____
 City _____ State _____ Zip _____
 Phone _____ Email _____

Please do not share my address with any other organization

Send Membership application and check to:
 California Native Plant Society (or CNPS)
 2707 K Street, Suite 1
 Sacramento, California 95816-5113

You can also join or renew online at www.cnps.org