

Checklist of Ventura County Rare Plants¹

By David L. Magney

California Native Plant Society, Channel Islands Chapter

Updated 20 June 2011

Ventura County is located in southern California, USA, along the east edge of the Pacific Ocean. The coastal portion occurs along the south and southwestern quarter of the County. Ventura County is bounded by Santa Barbara County on the west, Kern County on the north, Los Angeles County on the east, and the Pacific Ocean generally on the south (Figure 1, General Location Map of Ventura County).

Ventura County extends north to 34.9014°N latitude at the northwest corner of the County. The County extends westward at Rincon Creek to 119.47991°W longitude, and eastward to 118.63233°W longitude at the west end of the San Fernando Valley just north of Chatsworth Reservoir. The mainland portion of the County reaches southward to 34.04567°N latitude between Solromar and Sequit Point west of Malibu. When including Anacapa and San Nicolas Islands, the southernmost extent of the County occurs at 33.21°N latitude and the westernmost extent at 119.58°W longitude, on the south side and west sides of San Nicolas Island, respectively.

Ventura County occupies 480,996 hectares [ha] (1,188,562 acres [ac]) or 4,810 square kilometers [sq. km] (1,857 sq. miles [mi]), which includes Anacapa and San Nicolas Islands. The mainland portion of the county is 474,852 ha (1,173,380 ac), or 4,748 sq. km (1,833 sq. mi.) in area and ranges in elevation from sea level on the southwest to 2,692 meters [m] (8,831 feet [ft.]) above sea level at its northern border on Mount Piños (Figure 2, Shade Relief Map of Mainland Ventura County). There appears to be some discrepancy in the actual area covered by Ventura County, depending on the source. For example, according to the California County Fact Book, 1983 edition (California Supervisors Association of California 1983), Ventura County occupies an area of 482,668 ha (1,192,680 ac) or 2,999 sq. km (1,863.6 sq. mi), with 3,254 ha (8,040 ac) or 20.3 sq. km (12.6 sq. mi) of that as water. The discrepancy appears to be a little over 2,469 ha (6,100 ac), which does not correspond to the area occupied by the two islands within the County. However, the difference does appear to match the area occupied by a rectangular portion of the county in the northeast corner, where the Ventura County Board of Supervisors voted to give away approximately 6,100 acres to Kern County to accommodate a proposed development that Ventura County felt it could not provide adequate County services to.

Mainland Ventura County is located between 34°00' and 35°00'N latitude and 118°38' and 119°28'W longitude, excluding Anacapa and San Nicolas Islands, and is generally longer than wide. Anacapa Islands are the smallest and easternmost of the northern Channel Islands while San Nicolas Island is an outer southern Channel Island.

¹ This document should be cited as: Magney, D.L. 2011. Checklist of Ventura County Rare Plants. 20 June 2011, Nineteenth Edition. California Native Plant Society, Channel Islands Chapter, Ojai, California. (Previous published update dated 10 October 2010.)

Figure 1. General Location Map of Ventura County

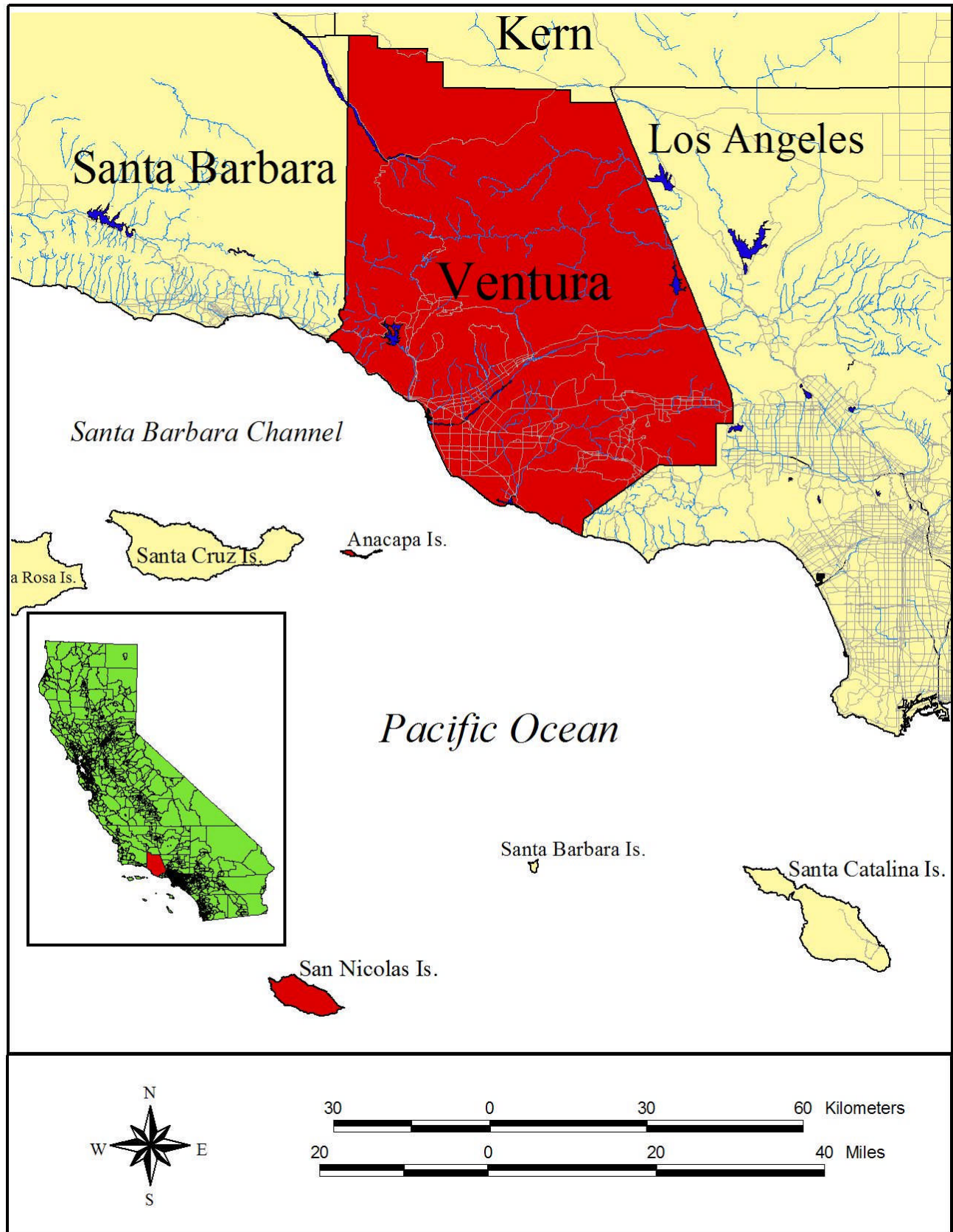
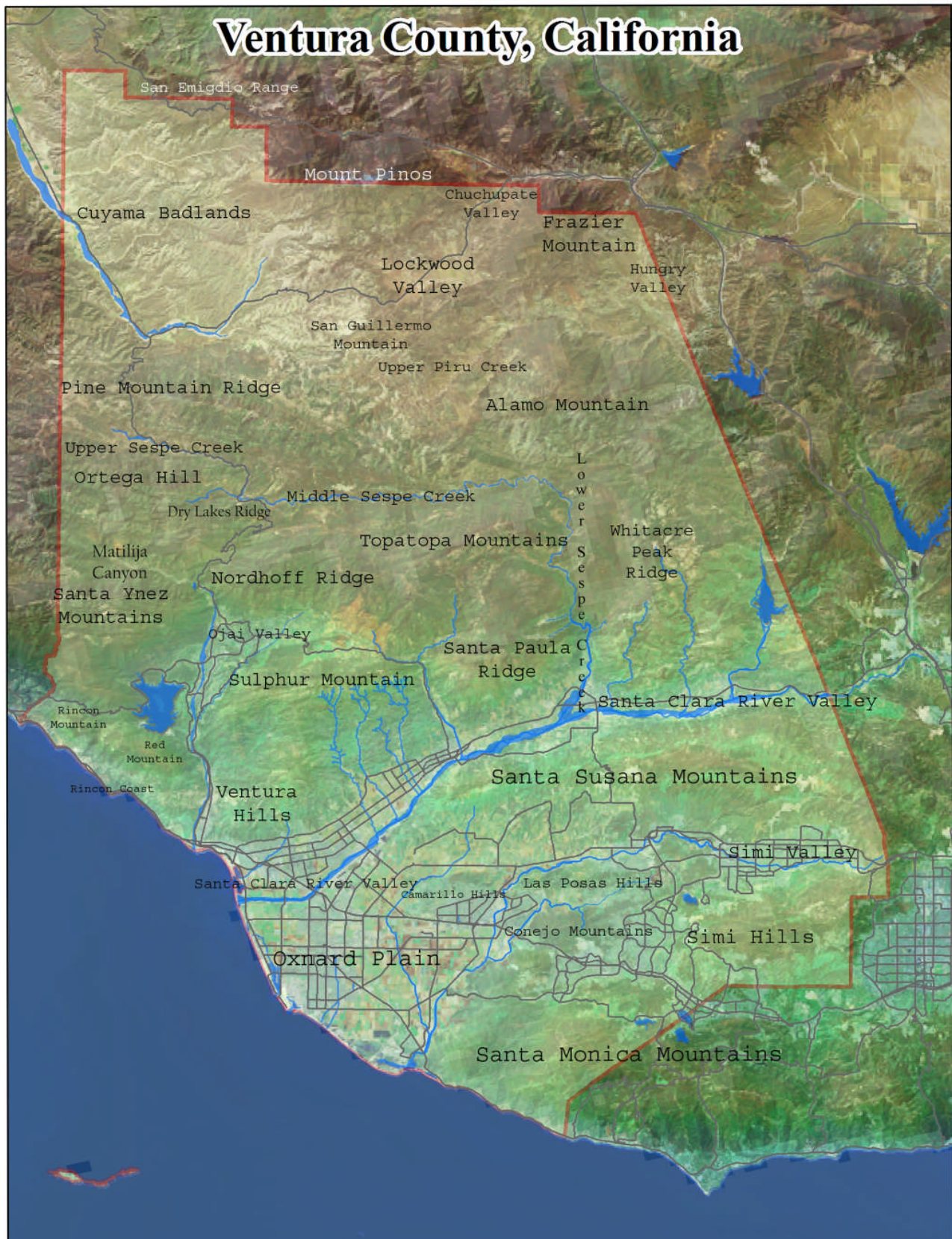


Figure 2. Shade Relief Map of Mainland Ventura County



The flora of Ventura County is comprised of approximately **2,658** native and naturalized vascular plant taxa, including those expected to occur but for which no vouchers are known (204 taxa) (Magney 2011²). A total of 2,333 taxa (87.8%) are known to occur in the county that are supported by voucher specimens, with another 121 that have been observed by the author or reported by others. Approximately 1,802 taxa (75.3%) of the flora are native, and another 591 (24.7%) taxa are not native (based on a flora of 2,393 taxa). A small percentage (8.9%) of the flora taxa (213 taxa) are quite common (dominant or common), on a scale ranging from dominant to rare (dominant, common, occasional, scattered, uncommon, and rare). Many more of the plant taxa in Ventura County are uncommon to quite rare.

All the species (including varieties and subspecies, which are lower taxonomic units than full species) of native and naturalized plants are important components of the biodiversity of life in Ventura County. While most species do not recognize political boundaries, such as county boundaries, our government agencies set policies and manage land use and resources based on such jurisdictional boundaries.

This list represents a compilation of known records and observations (many by the author) of all native vascular plant species:

- With ten (10) or fewer populations within Ventura County;
- Listed by CNPS on a statewide basis (CNPS 2001, 2010);
- Listed by the US Fish and Wildlife Service as Threatened or Endangered under the federal Endangered Species Act;
- Listed by the California Fish and Game Commission as Rare, Threatened, or Endangered;
- Are at the limits of their distribution range (southernmost, northernmost, westernmost extent); or
- The Type Locality occurs within the County (then only the Type Locality is considered sensitive).

Some taxa are considered rare or uncommon throughout California, as established by the California Native Plant Society (CNPS) in its *Inventory of Rare and Endangered Plants of California*, sixth edition³, even though more than ten populations are known from Ventura County, including Anacapa Islands and San Nicolas Island. Currently there are **1,233**⁴ taxa (50.2% of the known county flora) included on this list of locally rare plants (including taxa rare statewide), which include taxa on the mainland and two islands (Anacapa and San Nicolas). Another 150 (6.1% of the expected flora of 2,454 taxa) were appended that are likely to occur in the County but for which no voucher specimens or reliable locality data are available. These are included at the end of this list. Many of these potential additions are known to occur in adjacent counties and expected to occur in Ventura County. A total of 60 plants (2.4%) considered rare in Ventura County occur only on the Channel Islands (Anacapa and San Nicolas Islands) portion of the county. A number of taxa were deleted from this list when over ten occurrences were known to occur in Ventura County.

This list was compiled as the results of extensive research of the flora of Ventura County. It is based on extensive field searches; examination of specimens collected by others housed at public herbaria; and published reports. The author began research on the Ventura County flora in the late 1970s.

Soon to be published separately, *Ventura County Rare Plants* will provide much more information about those plants included in this checklist, including: a brief description of the plant, habitat

² Magney, David L. 2011. *A Flora of Ventura County: Annotated Catalogue of Vascular Plants*. Unpublished manuscript of 20 June 2011. David Magney Environmental Consulting, Ojai, California.

³ California Native Plant Society. 2001. *Inventory of Rare and Endangered Plants of California*. Sixth edition. (Special Publication No. 1.) Rare Plant Scientific Advisory Committee, David Tibor, Convening Editor, Sacramento, California. September.

⁴ This number is sixteen (16) more taxa than included on the previous edition of this list.

preferences, associated plant communities, elevation range, and blooming period. That publication will include additional information for each taxon, including complete scientific name, known synonyms, common name(s), habit and size, rarity status, months it is in bloom or identifiable, and general and specific locality data, with supporting voucher collection information. Each specimen cited for a specific location includes the name of the collector, the collection number (or collection date if no number was assigned), and the herbarium in which it is stored (some duplicate specimens have been deposited in more than one herbarium). Location information is provided at two levels: a general geographic area, and then specific locations.

This list should be considered the best available information at the time of publication, as our knowledge of the Ventura County flora is dynamic, and growing with each botanical survey or foray. This checklist will be updated periodically and revised according to all new verifiable information provided. Occurrences of vascular plants found in Ventura County that add to or could change the status of any plant listed here should be submitted to the author via CNPS (attention: David Magney) or via email to [david\(at\)magney\(dot\)org](mailto:david(at)magney(dot)org). Any lists submitted must be supported by voucher specimens that are deposited in a public herbarium, according to CNPS and California Botanical Society policies based on Ferren et al. (1995⁵).

Plants not included in CNPS's *Inventory*, or listed by federal and state agencies, that have more than ten populations in Ventura County will be dropped from this list, except for those plants:

- representing range limits, such as the westernmost limit of the taxons range; or
- the "Type Locality" sites ("Type Locality" sites are the sites from which the plant was originally collected and formally described from, and is represented by a "Type Specimen", for which a note occurs after the herbarium at which it is deposited as "Holotype" or "Isotype").

For those plants that are otherwise relatively common in Ventura County, only the populations that represent the limit of a plants range should be considered of concern (as sensitive), with the remaining population(s) noted to provide perspective, but not considered sensitive/rare for the purposes of this checklist. *Artemisia tridentata* var. *tridentata* is an example of this, where it should be considered of local concern when it occurs in the western portion of the Santa Clara River Valley (the limit of its range) while the populations in the Upper Sespe Creek watershed and the northern part of the county are not of concern from a rarity perspective.

Special-status species are plants that are either listed as endangered or threatened under the Federal or California Endangered Special Acts; or considered to be rare under the California Native Plant Protection Act; or considered to be rare (but not formally listed) by resource agencies, professional organizations (e.g. California Native Plant Society), and the scientific community. For the purposes of this checklist, special-status species are further defined in Table 1, Definitions of Special-Status Plant Species.

Listed species are those taxa that are formally listed as endangered or threatened by the federal government (e.g. U.S. Fish and Wildlife Service [USFWS]) pursuant to the national Endangered Species Act or as endangered, threatened, or rare (for plants only) by the State of California (i.e. California Fish and Game Commission) pursuant to the California Endangered Species Act or the California Native Plant Protection Act.

The CNDDDB Element Ranking system provides a numeric global and state ranking system for all special-status plant and wildlife species and rare habitats tracked by the CNDDDB. The global rank (G-

⁵ Ferren, W.R., Jr., D.L. Magney, and T.A. Sholars. 1995. The Future of California Floristics and Systematics: Collecting Guidelines and Documentation Techniques. *Madroño* 42(2):197-210.

rank) is a reflection of the overall condition of an element (species or natural community) throughout its global range. The state ranking (S-rank) is assigned much the same way as the global rank, except state ranks in California often also contain a threat designation attached to the S-rank. This Element Ranking system is defined below in Table 2, Natural Diversity Data Base Element Ranking System. Not all special-status species considered in this checklist are tracked by the CNDDDB, nor have global or state rarity ranking been given to them; therefore, the author has applied the rules described above to “rank” those special-status species lacking such ranking. Taxa for which Global and State rarity ranking have been devised here are followed by a “?” in parentheses, denoting tentative assignment.

Table 1. Definitions of Special-Status Plant Species

<ol style="list-style-type: none"> 1. Plants legally protected under the California and Federal Endangered Species Acts or under other regulations. 2. Plants considered sufficiently rare by the scientific community to qualify for such listing; or 3. Plants considered to be sensitive because they are unique, declining regionally or locally, or are at the extent of their natural range.
Special-Status Plant Species
<ul style="list-style-type: none"> ◆ Plants listed or proposed for listing as threatened or endangered under the Federal Endangered Species Act (50 CFR 17.12 for listed plants and various notices in the Federal Register for proposed species). ◆ Plants that are Category 1 or 2 (species of special concern) candidates for possible future listing as threatened or endangered under the Federal Endangered Species Act (55 CFR 6184, February 21, 1990). ◆ Plants that meet the definitions of rare or endangered species under the CEQA (<i>State CEQA Guidelines</i>, Section 15380). ◆ Plants considered by the CNPS to be "rare, threatened, or endangered" in California (Lists 1A, 1B, and 2 in CNPS [2001]⁶). ◆ Plants listed by CNPS as plants about which we need more information and plants of limited distribution (Lists 3 and 4 in CNPS [2001]). ◆ Plants listed or proposed for listing by the State of California as threatened or endangered under the California Endangered Species Act (14 CCR 670.5). ◆ Plants listed under the California Native Plant Protection Act (California Fish and Game Code 1900 <i>et seq.</i>). ◆ Plants considered sensitive by other federal agencies (i.e. U.S. Forest Service, Bureau of Land Management) or state and local agencies or jurisdictions. ◆ Plants considered sensitive or unique by the scientific community or occurring at the limits of its natural range (<i>State CEQA Guidelines</i>, Appendix G).

CNPS’s *Inventory of Rare and Endangered Plants of California*⁷ categorizes rare California plants into one of five lists (1A, 1B, 2, 3, & 4) representing the five levels of species status, one of which is assigned to a sensitive species to indicate its status of rarity or endangerment and distribution. A CNPS List is a more general designation than the three separate sets of information provided in a CNPS R-E-D Code (see the CNPS *Inventory* for definitions). However, the CNPS List is a significant designation in terms of a species’ overall status throughout all of California, and it works well in conjunction to the specifications of the R-E-D Code. The CNPS R-E-D Code is a three-numbered numeric ranking, which is assigned to a special-status species, consisting of one number (1, 2, or 3) for each of the three categories (Rarity-Endangerment-Distribution). Each number accurately describes the species’ population levels and distribution patterns within each category.

As described for the NDDDB ranking, not all special-status species (most) considered in this checklist are tracked by CNPS, nor have R-E-D codes been given to them; however, the author has applied the

⁶ California Native Plant Society. 2001. *Inventory of Rare and Endangered Plants of California*. Sixth Edition. Sacramento, California. September.

⁷ Ibid.

rules described above to “rank” those special-status species lacking such ranking to either “rare” or “uncommon”; however, these rankings are not included in the checklist. Rather the occurrence rankings for each are provided in the *Ventura County Rare Plants* and in the *Flora of Ventura County* to be published in 2006 by the author.

The large number of taxa on this list is the result of several factors:

1. Development in Ventura County has eliminated a majority of the natural vegetation in the southern half of the County, eliminating many occurrences of native plant species;
2. A number of taxa found nowhere else are present in Ventura County, local endemics, and several of these are listed as threatened or endangered by either the California Department of Fish and Game or the U.S. Fish and Wildlife Service;
3. Ventura County is geographically situated such that floral influences from the north, south, and east enter the County at its edges (limits of some species’ ranges);
4. Anacapa and San Nicolas Islands support many species found only on the California Channel Islands, including island endemics;
5. Ventura County is topographically and climatically diverse, providing numerous habitats for uncommon and rare species; and
6. Botanical surveys have not been conducted systematically everywhere in the County. In other words, the flora of Ventura County is not fully understood or documented, and additional populations of a number of the plants listed below likely occur in the County, we just aren’t aware of them yet. Regardless, significant collecting has occurred in the County over the last 150 years, and the author has a reasonably good understanding of the flora.

This list was compiled according to definitions under the California Environmental Quality Act (CEQA) under Initial Study Checklist Section 6, Subsections A and E. Projects reviewed under CEQA should consider impacts to one or more of the species included in this checklist as potentially significant. Generally, if a project would impact a population of one or more of the plants listed herein, that/those impact(s) should be considered significant unless substantial evidence is provided that may support an alternate conclusion.

What significance does a list of locally rare species have under CEQA?

The following answer is provided by John Buse, Esq., of the Environmental Defense Center of Ventura, California⁸. The CEQA Guidelines provide that a lead agency shall find that a project may have a significant effect on the environment if the project “... has the potential to ... reduce the number or restrict the range of an endangered, rare or threatened species ...”. Guidelines §15065(a). In addition, the CEQA Guidelines Appendix G Environmental Checklist Form considers whether a project would “have a substantial adverse effect, either directly or through habitat modifications, on any species identified as a candidate, sensitive, or special status species in local or regional plans, policies, or regulations ...”.

According to the CEQA Guidelines, a species is considered “rare” when either:

- (A) Although not presently threatened with extinction, the species is existing in such small numbers throughout all or a significant portion of its range that it may become endangered if its environment worsens; or

⁸ Buse, John, Esq., Environmental Defense Center, memorandum to David Magney of CNPS dated 14 September 2002.

- (B) The species is likely to become endangered within the foreseeable future throughout all or a significant portion of its range and may be considered “threatened” as that term is used in the Federal Endangered Species Act. Guidelines §15380(b)(2).

Table 2. Natural Diversity Database Element Ranking System

Global Ranking (G)	
G1	Less than 6 viable element occurrences (populations for species) OR less than 1,000 individuals OR less than 809.4 hectares (ha) (2,000 acres [ac]).
G2	6 to 20 element occurrences OR 809.4 to 4,047 ha (2,000 to 10,000 ac).
G3	21 to 100 element occurrences OR 3,000 to 10,000 individuals OR 4,047 to 20,235 ha (10,000 to 50,000 ac).
G4	Apparently secure; this rank is clearly lower than G3 but factors exist to cause some concern (i.e. there is some threat, or somewhat narrow habitat).
G5	Population or stand demonstrably secure to ineradicable due to being commonly found in the world.
GH	All sites are historic ; the element has not been seen for at least 20 years, but suitable habitat still exists.
GX	All sites are extirpated ; this element is extinct in the wild.
GXC	Extinct in the wild; exists in cultivation.
G1Q	The element is very rare, but there is a taxonomic question associated with it.
Subspecies Level	
Subspecies receive a T-rank attached to the G-rank. With the subspecies, the G-rank reflects the condition of the entire <u>species</u> , whereas the T-rank reflects the global situation of just the <u>subspecies</u> or <u>variety</u> . For example: <i>Chorizanthe robusta</i> var. <i>hartwegii</i> . This plant is ranked G2T1. The G-rank refers to the whole species range (i.e. <i>Chorizanthe robusta</i> , whereas the T-rank refers only to the global condition of var. <i>hartwegii</i>).	
State Ranking (S)	
S1	Less than 6 element occurrences OR less than 1,000 individuals OR less than 809.4 ha (2,000 ac). S1.1 = very threatened S1.2 = threatened S1.3 = no current threats known
S2	6 to 20 element occurrences OR 3,000 individuals OR 809.4 to 4,047 ha (2,000 to 10,000 ac). S2.1 = very threatened S2.2 = threatened S2.3 = no current threats known..
S3	21 to 100 element occurrences OR 3,000 to 10,000 individuals OR 4,047 to 20,235 ha (10,000 to 50,000 ac). S3.1 = very threatened S3.2 = threatened S3.3 = no current threats known
S4	Apparently secure within California; this rank is clearly lower than S3 but factors exist to cause some concern (i.e. there is some threat, or somewhat narrow habitat). NO THREAT RANK.
S5	Demonstrably secure to ineradicable in California. NO THREAT RANK.
SH	All California sites are historic ; the element has not been seen for at least 20 years, but suitable habitat still exists.
SX	All California sites are extirpated ; this element is extinct in the wild.

Notes: 1. Other considerations used when ranking a species or natural community include the pattern of distribution of the element on the landscape, fragmentation of the population/stands, and historical extent as compared to its modern range. It is important to take a bird’s eye or aerial view when ranking sensitive elements rather than simply counting element occurrences.

2. Uncertainty about the rank of an element is expressed in two major ways: by expressing the rank as a range of values (e.g., S2S3 means the rank is somewhere between S2 and S3), and by adding a ? to the rank (e.g. S2?). This represents more certainty than S2S3, but less than S2. (CNDDDB 2002.)

Species already listed under the California or federal ESA shall be presumed to be endangered, rare, or threatened. Guidelines §15380(c). A species not currently listed shall nevertheless be considered to be endangered, threatened, or rare if it meets the criteria in the CEQA definitions of “endangered” or “rare”. The term “sensitive” species, which appears in the Appendix G checklist, is not defined in CEQA.

If a species is considered locally rare due to its limited occurrence within a political boundary, such as the County of Ventura, and if the species’ local population constitutes a significant portion of its range, the species must be considered a rare species under CEQA. The mere placement of a species on a list of locally rare species is probably not enough to meet the CEQA criteria for endangered, threatened, or rare species. However, if the list contains some additional explanation indicating why the species meets the CEQA criteria, such as the fact that the local population constitutes a significant portion of the species’ range, the list should provide substantial evidence of rarity.

If the CEQA criteria are satisfied, it is irrelevant that a species is relatively common in other locations. For example, the Pacific Coast populations of the Snowy Plover are listed as threatened under the federal ESA, despite the fact that inland populations are relatively common and are not protected. The existence of the non-listed populations does not diminish the Snowy Plover’s status as a endangered, threatened, or rare species under CEQA. By extension, if the Pacific Coast populations of the Snowy Plover were not listed as threatened, these populations would still be considered endangered, threatened, or rare under CEQA. Accordingly, the special status for Snowy Plover in Ventura County under CEQA would still apply even if Snowy Plover was relatively common in, for example, Mono County. Assertions implying that a species necessarily does not warrant inclusion on a list of locally rare species if it is common elsewhere in California simply because it occurs rarely in Ventura County within a political boundary are incorrect. As the Snowy Plover example indicates, there will be instances when a locally rare species must be considered rare under CEQA despite the species’ common occurrence elsewhere in California.

Snowy Plover on the Pacific Coast is protected under the federal ESA based on the concept of a “distinct population segment” (DPS). Something similar to the DPS concept could be used to determine whether a locally rare species is, in fact, endangered, threatened, or rare under CEQA. The federal ESA allows a DPS, defined according to geographic or reproductive isolation, to be treated as a “species”. Therefore, as in the Snowy Plover example, a DPS can be listed even though the populations of the taxonomic species are common elsewhere. CEQA does not preclude use of the DPS concept to assist in understanding whether a species is endangered, threatened, or rare based on its local rarity; on the contrary, the CEQA Guidelines definition of “rare” appears to invite the consideration of similar circumstances that would inform the determination of a DPS under the federal ESA.

Under CEQA, lead agencies have considerable discretion in determining whether a species should be considered rare or sensitive. See, for example, the *State CEQA Guidelines* Appendix G checklist cited above, which indicates that lead agencies may designate candidate, sensitive, or special-status species in local or regional plans, policies, or regulations. A list of locally rare or sensitive species, if it is developed based on evidence that the local rarity meets the CEQA criteria for rarity, will effectively establish a rebuttable presumption of significance for species that may be adversely affected by a project. In this respect, a list of locally rare species as presented below will function in a manner similar to the threshold of significance that a lead agency may establish. CEQA requires, however, that thresholds of significance for general use in a lead agency’s environmental review process “must be adopted by ordinance, resolution, rule, or regulation, and developed through a public review process and be supported by substantial evidence.” Guidelines §15064.7. For a list of locally rare or sensitive species to function as a set of thresholds of significance, therefore, the list should be adopted through a

public review process. Even if the list is not adopted through a public review process, it will establish substantial evidence of rarity if it is accompanied by additional information showing, for example, that the local occurrences of a listed species constitute a substantial portion of the species' range.

CNPS believes that this list of locally rare plants meets the definitions of rarity, at least locally, to satisfy consideration under CEQA. This checklist is supported by substantial evidence in the files of the author and data obtained from public herbaria and knowledgeable local botanists. Many of the taxa listed in this checklist are also listed by CNPS as rare or sensitive statewide, as well as those taxa formally listed under the California and/or federal ESA.

This checklist is updated regularly based on new information on the Ventura County flora. Species are added or deleted from this list as the new data warrant; therefore, be sure to obtain the most up-to-date version of this checklist. For example, for this update, compared to the 10 October 2010 edition (previous), 47 taxa were added, 31 were dropped (listed at end of this list), 13 had some sort of name change or a spelling error corrected, 23 had their rarity status changed (usually lowered from Rare to Uncommon), and 1 taxon was added to the "expected to occur" list. Future changes to this list will not likely be as dramatic as the status of the flora of Ventura County is now better understood after extensive searches of California public herbaria were conducted through the Jepson Herbarium on-line Consortium database.

The most up-to-date version can be downloaded (as a PDF) from the Channel Islands Chapter CNPS website at www.cnpsci.org, or by contacting the author directly. Please send your notes on corrections, errors, and plant populations/occurrences you are aware of that may not be on this checklist to the author: David Magney, P.O. Box 1346, Ojai, CA 93024-1346 or via email at [david\(at\)magney\(dot\)org](mailto:david(at)magney(dot)org). Also contact the author if you need any specific locality data on any particular taxon included in this checklist.

Checklist of Rare Plants

Scientific Name⁹

Abies concolor (Gordon & Glendinning) Lindl. Ex Hildebr.
Abronia maritima Nutt. ex S. Watson X *A. umbellata* Lam.
Abronia maritima Nutt. ex S. Watson
Abronia neurophylla Standl.
Abronia pogonantha Heimerl
Abronia turbinata Torr. ex S. Watson
Abronia villosa S. Watson var. *aurita* (Abrams) Jeps.
Acamptopappus sphaerocephalus (Har. & A. Gray) A. Gray var. *sphaerocephalus*
Acanthomintha obovata var. *cordata* Jokerst
Acanthoscyphus [*Oxytheca*] *parishii* (Parry) Small var. *parishii*
Achnatherum aridum (M.E. Jones) Barkworth
Achnatherum occidentale (Thurber) Barkworth ssp. *occidentalis*
Achnatherum occidentale ssp. *pubescens* (Vasey) Barkworth
Achnatherum parishii (Vasey) Barkworth

Common Name¹⁰

California White Fir (U) LPNF
Hybrid Sand-verbena (R)
Red or Sticky Sand-verbena (U) CNPS 4
Beach Sand-verbena (R)
Desert Sand-verbena (R)
Turbinate Sand-verbena (R)
Woolly Sand-verbena (R)
Rayless Goldenhead (R)
Heartleaf Thornmint (U)
Parish's *Oxytheca* (R) CNPS 4.2
Mormon Needlegrass (R)
Western Needlegrass (R)
Elmer Needlegrass (R)
Parish Needlegrass (R)

⁹ Scientific name: The complete scientific name is provided for each taxon and consists of the genus, species, and author (person who formally described and named the plant). Underlined entries indicate taxa found only on the Channel Islands (Anacapa or San Nicolas Islands).

¹⁰ Common names are given for all taxa, many of which are invented by the author as no common name has been identified otherwise. "R", "U", "Limits", or "Type" in parentheses indicated the category of rarity: R = rare (formally listed by USFWS, CDFG, CNPS, or with 5 or fewer occurrences in Ventura County); U = uncommon (with 6 to 10 occurrences in Ventura County); Limits = indicate taxon reaches its distribution limits in Ventura County; Type = type locality is within Ventura County.

Scientific Name

Achnatherum thurberianum (Piper) Barkworth
Achyrachaena mollis Schauer
Adenostoma sparsifolium Torrey
Aesculus californica (Spach) Nutt.
Agoseris elata (Nuttall) E. Greene
Agrostis exarata Trin.
Agrostis hallii Vasey
Agrostis pallens Trin.
Agrostis stolonifera var. *palustris* (Hudson) Pers.
Alisma plantago-aquaticum L.
Allium amplexans Torrey
Allium cratericola Eastw.
Allium denticulatum (Traub) D. McNeal
Allium diabloense (Traub) D. McNeal
Allium haemaetochiton S. Watson
Allium howellii var. *clokeyi* Traub
Allium lacunosum S. Watson var. *lacunosum*
Allium lacunosum var. *davisiae* (M.E. Jones) D. McNeal
Allium monticola Davidson
Allium parryi S. Watson
Allium parvum Kellogg
Allium peninsulare Lemmon var. *peninsulare*
Allium praecox Brandegee
Allium sanbornii Alph. Wood var. *sanbornii*
Allium tribracteatum Torrey
Allium vineale L.
Allophyllum divaricatum (Nuttall) A.D. Grant & V. Grant
Allophyllum gilioides (Benth) A.D. Grant & V. Grant ssp. *gilioides*
Allophyllum integrifolium (Brand) A.D. Grant & V. Grant
Alnus incana ssp. *tenuifolia* (Nuttall) Breitung
Alopecurus carolinianus Walter
Alopecurus saccatus Vasey
Amaranthus blitoides S. Watson
Amaranthus californicus (Moq.) S. Watson
Amaranthus palmeri S. Watson
Amaranthus powellii S. Watson ssp. *powellii*
Amaranthus powellii ssp. *bouchenii* (Thell.) Costea & Carretero
Ambrosia chamissonis (Less.) E. Greene
Ambrosia confertiflora DC.
Ambrosia salsola (T.&G. Ex G.) Stother & B.G. Baldwin var. *salsola*
Ambrosia salsola var. *fasciculata* (A. Nelson) Stother & B.G. Baldwin
Amelanchier alnifolia var. *pumila* (Nuttall) Nelson
Amelanchier pallida E. Greene
Amelanchier utahensis Koehne
Ammannia coccinea Rottb.
Ammannia robusta Heer & Regel
Amsinckia douglasiana A. DC.
Amsinckia spectabilis Fischer & C. Meyer var. *spectabilis*
Amsinckia tessellata Gray var. *tessellata*
Amsinckia tessellata var. *gloriosa* (Suksd.) Hoover
Amsinckia vernicosa Hook. & Arn. var. *vernica*
Ancistrocarphus filagineus Gray
Andropogon glomeratus var. *pumilus* Vasey ex Dewey
Andropogon glomeratus var. *scabriglumis* C.S. Campbell
Androsace elongata ssp. *acuta* (E. Greene) G. Robb.
Anisocoma acaulis Torrey & A. Gray

Common Name

Thurber Needlegrass (R)
Blow-Wives (U)
Red Shank, Ribbon-bush (R)
California Buckeye (R)
Tall Mountain Dandelion (R)
Western or Spike Bentgrass (U)
Hall's Bentgrass (R)
Thinggrass (R)
Creeping Bentgrass (U)
Common or Broadleaf Water-plantain (R)
Narrowleaf Onion (R)
Cratered Onion (R)
Dentate Fringed Onion (R)
Diablo Onion (U)
Red-skinned Onion (U)
Mount Pinos Onion (R, Type) CNPS 1B
Pitted Onion (R)
Davis Onion (R, W Limits)
Mountain Onion (R)
Parry Fringed Onion (R)
Small Onion (R)
Peninsular Onion (R)
Early Onion (R)
Sanborn Onion (R)
Three-bracted Onion (R)
Wild Garlic (R)
Divaricate Allophyllum (R)
Stragglng Gilia (U)
Sticky Allophyllum (R)
Mountain Alder (R, Disjunct, S Limits)
Carolina Foxtail (R)
Pacific Foxtail (R)
Prostrate Amaranth (U)
California Amaranth (R)
Palmer Amaranth (U)
Powell Amaranth (U)
Bouchenl Amaranth (R)
Beach Bur (U)
Weak-leaved Burweed or Bur-sage (R)
Burrobrush (R)
White Burrobrush (R)
Alderleaf Service-berry (R)
Western or Pallid Service-berry (R, Type)
Utah Service-berry (R)
Long-leaved or Purple Ammannia (R)
Grand Redstem (R)
Douglas Fiddleneck (R)
Showy Fiddleneck (R)
Devil's Lettuce, Tessellate Fiddleneck (R)
Glorious Fiddleneck (R)
Vernal or Green Fiddleneck (R)
Woolly Fishhooks (U)
Bushy Bluestem (R)
Southwestern Bushy Bluestem (U)
Rock-jasmine (R)
Scale Bud (U)

Scientific Name

Antennaria dimorpha (Nuttall) Torrey & A. Gray
Antirrhinum coulterianum Benth. ssp. *coulterianum*
Antirrhinum nuttallianum Benth. ssp. *nuttallianum*
Antirrhinum nuttallianum ssp. *subsessile* (A. Gray) D. Thompson
Antirrhinum ovatum Eastwood
Aphanes occidentalis (Nuttall) Rydb.
Aphanisma blitoides Moq.
Apocynum androsaemifolium L.
Apocynum X *medium* E. Greene (*A. androsaemifolium* ssp. *a.* var. *incanum* X *A. cannabinum* var. *hypericifolium*)
Aquilegia eximia Van Houtte ex Planchon
Aquilegia formosa var. *truncata* (Fischer & C.A. Meyer) Baker
Aralia californica S. Watson
Arbutus menziesii Pursh
Arceuthobium abietinum (Engelm.) Hawksw. & Wiens forma *concoloris*
Arceuthobium californicum Hawksworth & Wiens
Arceuthobium campylopodum Engelm.
Arceuthobium cyanocarpum Coulter & A. Nelson
Arceuthobium divaricatum Engelm.
Arceuthobium occidentale Engelm.
Arctostaphylos canescens Eastw.
Arctostaphylos glandulosa Eastw. X *A. glauca* Lindley
Arctostaphylos glandulosa ssp. *adamsii* (Munz) Munz
Arctostaphylos glandulosa ssp. *cushingiana* (Eastw.) Keeley, Vasey & Parker
Arctostaphylos patula Greene
Arctostaphylos pungens H.B.K.
Argemone corymbosa E. Greene ssp. *corymbosa*
Argemone munita ssp. *rotundata* (Rydb.) G. B. Ownbey
Aristida adscensionis L.
Aristida divaricata Humb. & Bonpl. ex Willd.
Aristida purpurea Nuttall var. *purpurea*
Aristida ternipes var. *hamulosa* (Henrard) J.S. Trent
Arnica discoidea Benth. var. *discoidea*
Artemisia ludoviciana Nuttall ssp. *ludoviciana*
Artemisia nesiotica Raven
Artemisia tridentata ssp. *parishii* (Gray) H.M. Hall & Clements
Artemisia tridentata ssp. *vaseyana* (Rydb.) Beetle
Arthrocnemum [*Salicornia*] *subterminalis* (Parish) Standley
Asclepias erosa Torrey
Asclepias vestita Hook. & Arn.
Asplenium vespertinum Maxon
Aster ascendens Lindley
Aster chilensis Nees
Aster greatae Parish
Aster lanceolatus ssp. *hesperius* (Gray) Semple & Chmielewski
Aster lentus E. Greene
Astragalus asymmetricus E. Sheldon
Astragalus brauntonii Parish
Astragalus coccineus Brandege
Astragalus curtipes A. Gray
Astragalus didymocarpus Hook. & Arn. var. *didymocarpus*
Astragalus didymocarpus var. *dispermus* (A. Gray) Jepson
Astragalus didymocarpus var. *milesianus* (Rydb.) Jeps.
Astragalus didymocarpus var. *obispoensis* (Rydb.) Jeps.
Astragalus douglasii var. *parishii* (Gray) M.E. Jones
Astragalus filipes Gray
Astragalus gambelianus E. Sheldon

Common Name

Low Everlasting (R)
 White Snapdragon (U)
 Nuttall Snapdragon (R)
 Nuttall Snapdragon (R)
 Oval-leaved Snapdragon (R)
 Dew-cup, Lady's Mantle (R)
 Aphanisma (R)
 Bitter Dogbane (U)
 Bitter Dogbane (R)
 Van Houtte Columbine (R)
 Truncate Crimson Columbine (U)
 Elk Clover, Spikenard (R)
 Pacific Madrone (R)
 Dwarf Fir Mistletoe (R)
 Sugar Pine Dwarf Mistletoe (R)
 Western Dwarf Mistletoe (U)
 Limber Pine Dwarf Mistletoe (R)
 Pinyon Dwarf Mistletoe (U)
 Foothill Pine Dwarf Mistletoe (R)
 Hoary Manzanita (R)
 Eastwood-Bigberry Manzanita Hybrid (R)
 Adams Eastwood Manzanita (R)
 Parker Cushing's Eastwood Manzanita (U)
 Greenleaf Manzanita (R)
 Pungent Manzanita (U)
 Desert Prickly Poppy (R)
 Prickly Poppy (R)
 Sixweeks Threawn Grass (R)
 Poverty Threawn Grass (R)
 Purple Three-awn Grass (R)
 Hook Threawn Grass (R)
 Rayless or Discoid Arnica (R)
 Silver or Western Mugwort (R)
 Island Sagebrush (R)
 Parish Great Basin Sagebrush (R, W Limits)
 Vasey Great Basin or Mountain Sagebrush (R)
 Common or Parish Glasswort (R)
 Desert Milkweed (R)
 Woolly Milkweed (R)
 Western Spleenwort (R)
 Long-leaved Aster (R)
 Common California Aster (U)
 Greata's Aster (R)
 Siskiyou Aster (R)
 Suisun Marsh Aster (R)
 Cockeyed Milkvetch (R)
 Braunton Milkvetch (R) Listed Endangered
 Scarlet Milkvetch (R)
 San Luis Obispo Milkvetch (R)
 Two-seeded Milkvetch (U)
 Disperse Two-seeded Milkvetch (R)
 South Coast Two-seeded Milkvetch (R)
 San Luis Obispo Two-seeded Milkvetch (R)
 Parish Milkvetch (R)
 Thread-leaved Locoweed (U)
 Dwarf Locoweed (U)

Scientific Name

Common Name

<i>Astragalus lentiginosus</i> Hook. var. <i>diphysus</i>	Freckled Locoweed (R)
<i>Astragalus lentiginosus</i> Hooker var. <i>fremontii</i> (A. Gray) S. Watson	Fremont Spotted Locoweed (U)
<i>Astragalus lentiginosus</i> var. <i>nigricalycis</i> M.E. Jones	Black-sepaled Freckled Locoweed (R)
<i>Astragalus lentiginosus</i> var. <i>sierrae</i> M.E. Jones	Bear Valley Milkvetch (R, CNPS 1B)
<i>Astragalus leucolobus</i> M.E. Jones	Bear Valley Woollypod (R)
<i>Astragalus leucopsis</i> Torrey var. <i>leucopsis</i>	Coast Rattleweed (R)
<i>Astragalus macrodon</i> (Hook. & Arn.) Gray	Salinas Valley Milkvetch (R)
<u><i>Astragalus miguelensis</i> Greene</u>	<u>San Miguel Milkvetch (R)</u>
<i>Astragalus nuttallii</i> (Torrey & A. Gray) J.T. Howell	Nuttall's Milkvetch (R)
<i>Astragalus oxyphysus</i> Gray	Robust Milkvetch (R)
<i>Astragalus pomonensis</i> M.E. Jones	Pomona Locoweed (R)
<i>Astragalus purshii</i> Douglas ex Hooker var. <i>purshii</i>	Pursh's Woollypod Milkvetch (R)
<i>Astragalus pycnostachyus</i> var. <i>lanosissimus</i> (Rydb.) Munz	Ventura Marsh Milkvetch (R/E)
<u><i>Astragalus traskiae</i> Eastwood</u>	<u>Trask Locoweed or Milkvetch (R)</u>
<i>Astragalus trichopodus</i> (Nutt.) Gray var. <i>trichopodus</i>	Three-pod Milkvetch (U)
<i>Astragalus trichopodus</i> var. <i>lonchus</i> (M.E. Jones) Barneby	Three-pod Milkvetch (U)
<i>Astragalus whitneyi</i> Gray var. <i>whitneyi</i>	Whitney Locoweed (R)
<i>Astragalus whitneyi</i> var. <i>pinosus</i> Elmer	Mount Pinos Locoweed (R, Type)
<i>Atriplex argentea</i> Nutt. var. <i>argentea</i>	Silverscale (R)
<i>Atriplex argentea</i> var. <i>expansa</i> (S. Watson) S.L. Welsh & Reveal	Broad Silverscale (R)
<i>Atriplex argentea</i> var. <i>mohavensis</i> (M.E. Jones) S.L. Welsh	Mojave Silverscale (R)
<i>Atriplex californica</i> Moq.	California Saltbush (U)
<i>Atriplex canescens</i> (Pursh) Nutt. var. <i>laciniata</i> Parish in Jepson	Caleb Saltbush (R)
<i>Atriplex linearis</i> S. Watson	Slenderleaf Saltbush (R)
<i>Atriplex coulteri</i> (Moq.) D. Dietr.	Coulter Saltbush (R)
<i>Atriplex dioica</i> Raf.	Thickleaf Orach (R)
<i>Atriplex lentiformis</i> (Torrey) S. Watson ssp. <i>lentiformis</i>	Big Saltbush, Quailbrush (U, W Limits)
<i>Atriplex leucophylla</i> (Moq.) D. Dietr.	Whiteleaf, Beach Saltbush or Seascale (U)
<i>Atriplex pacifica</i> Nelson	South Coast Saltbush (R)
<i>Atriplex polycarpa</i> (Torrey) S. Watson	Common Saltbush, Allscale (R)
<i>Atriplex serenana</i> Nelson var. <i>serenana</i>	Bractscale (R)
<i>Atriplex serenana</i> var. <i>davidsonii</i> (Standley) Munz	Davidson Bractscale (R)
<i>Atriplex subspicata</i> (Nutt.) Rydb.	Saline Saltscale (R)
<i>Atriplex triangularis</i> Willd.	Spearscale (U)
<i>Atriplex watsonii</i> Nelson	Matscale (R)
<i>Azolla filiculoides</i> Lam.	Duckweed Fern (U)
<i>Baccharis douglasii</i> DC.	Marsh Baccharis, Douglas False-willow (U)
<i>Baccharis emoryi</i> Gray	Emory Baccharis (R)
<i>Baccharis malibuensis</i> Beauchamp & Henrickson	Malibu Baccharis (R)
<i>Baccharis plummerae</i> Gray	Plummer Baccharis (U) CNPS List 4
<i>Batis maritima</i> L.	Saltwort, Beachwort (R)
<i>Berberis dictyota</i> Jeps.	Dull-leaf or Jeps. Holly-leaved Barberry (R)
<u><i>Berberis pinnata</i> ssp. <i>insularis</i> Munz</u>	<u>Island Barberry (R)</u>
<i>Berula erecta</i> (Huds.) Coville	Cutleaf Water-parsnip (R)
<i>Bidens frondosa</i> L.	Sticktight (R)
<i>Bidens laevis</i> (L.) Britton, Sterns & Pogg.	Bur-marigold (R)
<i>Bloomeria crocea</i> var. <i>montana</i> (E. Greene) Ingram	Mountain Goldenstars (U)
<i>Boechnera breweri</i> (S. Watson) Al-Shehbaz ssp. <i>breweri</i>	Brewer Rockcress (R, S Limits)
<i>Boechnera californica</i> (Rollins) Windham & Al-Shehbaz	California Rockcress (R)
<i>Boechnera repanda</i> (S. Watson) Al-Shehbaz	Yosemite Rockcress (U)
<i>Boechnera retrofracta</i> (Graham) A. Löve & D. Löve	Holboell Rockcress (R)
<i>Boechnera xylopoda</i> Windham & Al-Shehbaz	Desert Rockcress (R, SW Limits)
<i>Boerhavia coccinea</i> Mill.	Scarlet Spiderling (R)
<i>Bolboschoenous maritimus</i> X <i>B. robustus</i>	Hybrid Bulrush (R)
<i>Bolboschoenous robustus</i> (Pursh) Soják, Čas. Nár.	Seashore Bulrush (R)
<i>Boschniakia strobilacea</i> Gray	California Ground Cone (R)

Scientific Name

Common Name

<i>Bothriochloa barbinodis</i> (Lagasca) Herter	Cane Bluestem (U)
<i>Botrychium simplex</i> E. Hitchc.	Least Moonwort, Little Grapefern (R)
<i>Bowlesia incana</i> Ruiz Lopez & Pavon	Hoary Bowlesia (U)
<i>Boykinia occidentalis</i> T. & G.	Santa Lucia Brookfoam (R)
<i>Boykinia rotundifolia</i> C. Parry	Roundleaved Boykinia (R)
<i>Brickellia californica</i> (T. & G.) Gray X <i>B. nevinii</i> Gray	California-Nevin Brickellbush Hybrid (R)
<i>Brickellia desertorum</i> Coville	Desert Brickellbush (R)
<i>Brickellia multiflora</i> Kellogg	Gum-leaved Brickellbush (R)
<i>Brodiaea coronaria</i> (Salisbury) Jepson ssp. <i>coronaria</i>	Crown Brodiaea (R)
<i>Brodiaea terrestris</i> ssp. <i>kernensis</i> (Hoover) Niehaus	Harvest Brodiaea (R)
<i>Bromus arizonicus</i> (Shear) Stebbins	Arizona Brome (U)
<i>Bromus laevipes</i> Shear	Woodland Brome (R)
<i>Bromus maritimus</i> (Piper) Hitchcock	Maritime Brome (R)
<i>Bromus orcuttianus</i> (Shear) A. Hitchc.	Orcutt Brome (R)
<i>Bromus pseudolaevipes</i> Wagnon	Woodland Brome (R)
<i>Cakile edentula</i> (Bigelow) Hooker ssp. <i>edentula</i>	American Searocket (R)
<i>Calandrinia breweri</i> S. Watson	Brewer Calandrinia (R) CNPS List 4
<i>Calandrinia maritima</i> Nutt.	Seaside Redmaids (R) CNPS List 4
<i>Californica macrophylla</i> (H. & A.) Aldas., C. Navarro, P. Vargas, Ll. Saez & Aedo	Largeleaf Filaree (R)
<i>Callitriche marginata</i> Torrey	California Water-starwort, Wallow Starwort (R)
<i>Calocedrus decurrens</i> (Torrey) Florin	Incense Cedar (U)
<i>Calochortus catalinae</i> S. Watson	Catalina Mariposa Lily (R) CNPS List 4
<i>Calochortus clavatus</i> S. Watson ssp. <i>clavatus</i>	Club-haired Mariposa Lily (U) CNPS List 4
<i>Calochortus clavatus</i> ssp. <i>pallidus</i> (Hoover) Munz	Pale Yellow Mariposa Lily (R)
<i>Calochortus luteus</i> Lindley	Gold Nuggets (R)
<i>Calochortus palmeri</i> S. Watson var. <i>palmeri</i>	Palmer Mariposa Lily (R) CNPS List 1B
<i>Calochortus plummerae</i> Greene	Plummer Mariposa Lily (R) CNPS List 1B
<i>Calochortus weedii</i> var. <i>vestus</i> Purdy	Weed Mariposa Lily (R) CNPS List 1B
<i>Calyptridium monospermum</i> Greene	One-seeded Pussypaws (R)
<i>Calyptridium parryi</i> Gray var. <i>parryi</i>	Parry Calyptridium (U)
<i>Calyptridium umbellatum</i> (Torrey) Greene	Pussypaws (U)
<i>Calystegia macrostegia</i> ssp. <i>amplissima</i> Brummitt	Island Morning-glory (R)
<i>Calystegia malacophylla</i> ssp. <i>tomentella</i> var. <i>deltoidea</i> (Greene) Munz	Tehachapi Morning-glory (R)
<i>Calystegia occidentalis</i> ssp. <i>fulcrata</i> (Gray) Brummitt	Western Morning-glory (R)
<i>Calystegia occidentalis</i> ssp. <i>occidentalis</i> var. <i>tomentella</i> (Greene) Brummitt	Woolly Western Morning-glory (R)
<i>Calystegia peirsonii</i> (Abrams) Brummitt	Peirson's Morning-glory (R)
<i>Calystegia sepium</i> ssp. <i>binghamiae</i> (Greene) Brummitt	Bingham Morning-glory (R) CNPS List 1A
<i>Calystegia soldanella</i> (L.) R. Br.	Beach Morning-glory (U)
<i>Camissonia brevipes</i> (A. Gray) Raven ssp. <i>brevipes</i>	Yellow Cups (R)
<i>Camissonia campestris</i> cf. ssp. <i>obispoensis</i> Raven	San Luis Obispo Sun-cup (R)
<i>Camissonia cheiranthifolia</i> (Sprengel) Raim ssp. <i>cheiranthifolia</i>	Beach Primrose (R)
<i>Camissonia cheiranthifolia</i> ssp. <i>suffruticosa</i> (S. Watson) Raven	Beach Primrose (U)
<i>Camissonia confusa</i> Raven	Confusing Primrose (R)
<i>Camissonia graciliflora</i> (Hooker & Arnott) Raven	Hill Sun-cup (R)
<i>Camissonia ignota</i> (Jepson) Raven	Small Primrose (U)
<i>Camissonia luciae</i> Raven	Santa Lucia Sun-cup (R)
<i>Camissonia micrantha</i> (Sprengel) Raven	Tiny Primrose (U)
<i>Camissonia pallida</i> (Abrams) Raven ssp. <i>pallida</i>	Pale Primrose (R)
<i>Camissonia palmeri</i> (S. Watson) Raven	Palmer Primrose (R)
<i>Cardamine breweri</i> S. Watson var. <i>breweri</i>	Brewer's Bitter-cress (R)
<i>Cardamine oligosperma</i> Torrey & Gray	Few-seeded Bitter-cress (R)
<i>Cardamine pachystigma</i> (S. Watson) Rollins var. <i>pachystigma</i>	Toothwort (R)
<i>Cardionema ramosissimum</i> (Weinm.) A. Mels. & J.F. Macbr.	Sand Mat (R)
<i>Carex abrupta</i> Mackenzie	Abrupt-beaked Sedge (R)
<i>Carex athrostachya</i> Olney	Slender-beaked Sedge (R)
<i>Carex aurea</i> Nuttall	Golden-fruited Sedge (R)

Scientific Name

Common Name

<i>Carex barbarae</i> Dewey	Santa Barbara Sedge (R)
<i>Carex bolanderi</i> Olney	Bolander Sedge (R)
<i>Carex brainerdii</i> Mack.	Brainerd Sedge (R)
<i>Carex densa</i> L. Bailey	Dense Sedge (R)
<i>Carex douglasii</i> Boott	Douglas Sedge (R)
<i>Carex filifolia</i> var. <i>erostrata</i> Kük.	Short-grass Sedge (R)
<i>Carex fracta</i> Mackenzie	Fragile-sheathed Sedge (R)
<i>Carex globosa</i> Boott	Round-fruited Sedge (R)
<i>Carex hassei</i> L. Bailey	Hasse Sedge (R)
<i>Carex lanuginosa</i> Michaux	Woolly Sedge (R)
<i>Carex multicaulis</i> L. Bailey	Many-stemmed Sedge (R)
<i>Carex nebrascensis</i> Dewey	Nebraska Sedge (R)
<i>Carex pansa</i> L. Bailey	Sand Dune Sedge (R)
<i>Carex pellita</i> Muhl. ex Willd.	Woolly Sedge (R)
<i>Carex rossii</i> Boott	Ross Sedge (R)
<i>Carex schottii</i> Dewey	Schott Sedge (R)
<i>Carex spissa</i> L.H. Bailey	San Diego Sedge (R)
<i>Carex subfusca</i> W. Boott	Brown Sedge (U)
<i>Carex triquetra</i> Boott	Triangular-fruited Sedge (R)
<i>Castilleja angustifolia</i> (Nuttall) G. Don	Desert Indian Paintbrush (R)
<i>Castilleja applegatei</i> ssp. <i>disticha</i> (Eastw.) Chuang & Heckard	Eastwood Indian Paintbrush (R)
<i>Castilleja applegatei</i> ssp. <i>pinetorum</i> (Fern.) Chuang & Heckard	Wavyleaf Indian Paintbrush (R)
<i>Castilleja attenuata</i> (Gray) Chuang & Heckard	Valley Tassels (R)
<i>Castilleja densiflora</i> (Benth.) Chuang & Heckard ssp. <i>densiflora</i>	Dense-flowered Owl's Clover (R)
<i>Castilleja gyroloba</i> Pennell	Indian Paintbrush (R, Type)
<i>Castilleja lanata</i> ssp. <i>hololeuca</i> (Greene) Chuang & Heckard	White-felted Indian Paintbrush (R)
<i>Castilleja linariifolia</i> Benth.	Linaria-leaved Indian Paintbrush (R)
<i>Castilleja miniata</i> Hook. ssp. <i>miniata</i>	Great Red Indian Paintbrush (R)
<i>Castilleja minor</i> (A. Gray) A. Gray ssp. <i>minor</i>	Annual Indian Paintbrush (R)
<i>Castilleja minor</i> ssp. <i>spiralis</i> (Jeps.) Chuang & Heckard	Large-flowered Annual Indian Paintbrush (R)
<i>Castilleja mollis</i> Pennell	Soft-leaved Indian Paintbrush (R)
<i>Castilleja plagiotoma</i> A. Gray	Mojave Indian Paintbrush (R)
<i>Castilleja subinclusa</i> ssp. <i>franciscana</i> (Pennell) Chuang & Heckard	San Francisco Long-leaved Indian Paintbrush (R)
<i>Castilleja tenuis</i> (A.A. Heller) Chuang & Heckard	Bristle Owl's Clover (R)
<i>Caulanthus amplexicaulis</i> S. Watson var. <i>amplexicaulis</i>	Clasping-leaved Jewelflower (R)
<i>Caulanthus anceps</i> Payson	Lemmon Mustard (R)
<i>Caulanthus californicus</i> (S. Watson) Payson	California Jewelflower (R) Fed-Endangered
<i>Caulanthus heterophyllus</i> (Nutt.) Payson var. <i>heterophyllus</i>	Different-leaved Jewelflower (R)
<i>Caulanthus inflatus</i> S. Watson	Desert Candle (R)
<i>Caulanthus lemmonii</i> S. Watson	Lemmon Jewelflower (R)
<i>Ceanothus dentatus</i> T. & G.	Dentate Ceanothus (R)
<i>Ceanothus megacarpus</i> var. <i>insularis</i> (Eastw.) Munz	Island Ceanothus (R)
<i>Ceanothus megacarpus</i> var. <i>pendulous</i> McMinn	Pendulous Bigpod Ceanothus (R)
<i>Ceanothus oliganthus</i> var. <i>sorediatus</i> (Hook. & Arn.) Hoover	Jim Brush (R)
<i>Ceanothus palmeri</i> Trel.	Palmer Ceanothus (U)
<i>Ceanothus papillosus</i> ssp. <i>roweanus</i> McMinn	Wartleaf Ceanothus (R)
<i>Ceanothus papillosus</i> T. & G. ssp. <i>papillosus</i>	Wartleaf Ceanothus (U)
<i>Ceanothus tomentosus</i> var. <i>olivaceous</i> Jepson	Woollyleaf Ceanothus (R)
<i>Celtis reticulata</i> Torrey	Netleaf Hackberry (R)
<i>Centaurium exaltatum</i> (Griseb.) W. Wright ex Piper	Great Basin Centaury (U)
<i>Centaurium venustum</i> (A. Gray) B.L. Robins. ssp. <i>venustum</i>	Beautiful Centaury, Canchalagua (R)
<i>Centromadia parryi</i> ssp. <i>australis</i> (Keck) B.G. Baldwin	Southern Tarplant (R)
<i>Centrostegia thurberi</i> var. <i>macrotheca</i>	Thurber Spineflower (R)
<i>Ceratophyllum demersum</i> L.	Hornwort, Coontail (R)
<i>Cercocarpus betuloides</i> var. <i>blancheae</i> (C. Schneider) Little	Island Mountain Mahogany (R)
<i>Cercocarpus ledifolius</i> Nuttall var. <i>ledifolius</i>	Mountain Mahogany (U)

Scientific Name

Cercocarpus ledifolius var. *intermontanus* N. Holmgren
Chaenactis artemisiifolia (Gray) Gray
Chaenactis fremontii A. Gray
Chaenactis glabriuscula var. *heterocarpha* (A. Gray) H.M. Hall
Chaenactis glabriuscula var. *lanosa* (DC.) H.M. Hall
Chaenactis glabriuscula var. *megacephala* A. Gray
Chaenactis glabriuscula var. *orcuttiana* (Greene) H.M. Hall
Chaenactis stevioides Hook. & Arn.
Chaenactis xantiana Gray
Chamaesyce melanadenia (Torrey) Millsp.
Chamaesyce micromera (Engelm.) Wooton & Standl.
Chamaesyce ocellata (Durand & Hilg.) Millsp. ssp. *ocellata*
Chamaesyce polycarpa (Benth.) Millsp.
Chamaesyce polycarpa var. *hirtella* (Boiss.) Parish
Chamaesyce serpens (Kunth) Small
Chamaesyce serpyllifolia (Pers.) Small ssp. *serpyllifolia*
Cheilanthes clevelandii D.C. Eaton.
Cheilanthes cooperae D.C. Eaton
Cheilanthes newberryi (D.C. Eaton) Domin
Chenopodium atrovirens Rydb.
Chenopodium desiccatum A. Nelson
Chenopodium fremontii S. Watson
Chenopodium pratericola Rydb.
Chorizanthe blakleyi Hardham
Chorizanthe clevelandii C. Parry
Chorizanthe douglasii Benth.
Chorizanthe membranacea Benth.
Chorizanthe parryi var. *fernandina* (S. Watson) Jepson
Chorizanthe procumbens Nutt.
Chorizanthe staticoides forma *bracteata* Goodman
Chorizanthe uniaristata T. & G.
Chorizanthe watsonii T. & G.
Chrysothamnus nauseosus ssp. = *Ericameria nauseosa* var.
Chrysothamnus viscidiflorus (Hook.) Nutt. ssp. *viscidiflorus*
Cicuta douglasii (DC.) Coulter & Rose
Cirsium brevistylum Cronq.
Cirsium scariosum Nuttall
Clarkia affinis Lewis & Lewis
Clarkia cylindrica (Jepson) H. Lewis & M. Lewis ssp. *cylindrica*
Clarkia cylindrica ssp. *clavica* W. Davis
Clarkia dudleyana (Abrams) J.F. Macbr.
Clarkia heterandra (Torrey) H. Lewis & Raven
Clarkia modesta Jeps.
Clarkia purpurea ssp. *viminea* (Douglas) Lewis & Lewis
Clarkia rhomboidea Douglas
Clarkia speciosa F.H. Lewis & M.R. Lewis ssp. *speciosa*
Clarkia xantiana Gray ssp. *xantiana*
Claytonia exigua T. & G. ssp. *exigua*
Claytonia parviflora ssp. *viridis* (Davidson) J.M. Miller & Chambers
Claytonia rubra (J.T. Howell) Tidestrom ssp. *rubra*
Collinsia bartsiiifolia var. *davidsonii* (Parish) V. Newsom
Collinsia childii A. Gray
Collinsia parryi A. Gray
Collinsia parviflora Lindley
Collinsia torreyi var. *wrightii* (S. Watson) I.M. Johnston
Collomia grandiflora Lindley

Common Name

Cut-leaved Mountain Mahogany (U)
White Pincushion (U)
Desert Pincushion (R)
Different-seeded Yellow Pincushion (R)
Woolly Yellow Pincushion (U)
Big-flowered Yellow Pincushion (U)
Woolly Yellow Pincushion (R) CNPS List 1B
Desert Pincushion (R)
Xantus Pincushion (U)
Squaw Spurge (R)
Sonoran Sandmat (R)
Littley Spurge (R)
Golondrina (R)
Hairy Golondrina (R)
Matted Sandmat (R)
Thyme-leaved Spurge (R)
Cleveland Lip-fern (R)
Mrs. Cooper Lip-fern (R)
Cotton Fern (R)
Pigweed (R)
Aridland Goosefoot (R)
Fremont Goosefoot (U)
Narrow-leaved Goosefoot (R)
Blakley's Spineflower (R)
Cleveland Spineflower (R)
Douglas Spineflower (R)
Pink Spineflower (R)
San Fernando Valley Spineflower (R) Endangered
Prostrate Spineflower (R)
Bracted Turkish Rugging (R, Type)
One-awned Spineflower (R)
Watson's Spineflower (R)
taxonomic revisions
Yellow Rabbitbrush (R)
Western Water-hemlock (R)
Indian Thistle (R)
Elk Thistle (R)
Hairy Clarkia (R)
Cylindrical Godetia (R)
Cylindrical Godetia (R)
Dudley Godetia (R)
California Gaura (R)
Modest Clarkia (R)
Large Purple Clarkia (R)
Rhomboid Clarkia (U)
Redspot Clarkia (R)
Xantus Clarkia (R)
Small Miner's Lettuce (U)
Green Small-flowered Miner's Lettuce (R)
Red Miner's Lettuce (U)
Davidson White Chinese Houses (R)
Child Blue-eyed Mary (R)
Parry Blue-eyed Mary (U)
Blue-eyed Mary, Blue Lips (R)
Wright Blue-eyed Mary (U)
Large-flowered Collomia (U)

Scientific Name

Common Name

<i>Collomia tinctoria</i> Kellogg	Yellow-staining Collomia (R)
<i>Comarostaphylis diversifolia</i> ssp. <i>planifolia</i> (Jeps.) G. Wallace	Simpleleaf Summer Holly (R)
<i>Convolvulus simulans</i> Perry	Small-flowered Morning-glory (R)
<i>Conyza coulteri</i> Gray	Coulter Horseweed (R)
<i>Cordylanthus maritimus</i> Benth. ssp. <i>maritimus</i> [= <i>Chloropyron maritimum</i>]	Saltmarsh Birds-beak (R) Listed E
<i>Cordylanthus rigidus</i> ssp. <i>setiferus</i> Chuang & Heckard	Dark-tipped Rigid Bird's-Beak (U)
<i>Coreopsis calliopsidea</i> (DC.) A. Gray	Leafy-stemmed Coreopsis (R)
<i>Cornus glabrata</i> Bentham	Brown Dogwood (R)
<i>Cornus sericea</i> L. ssp. <i>sericea</i>	American or Creek Dogwood (R)
<i>Crassula aquatica</i> (L.) Schönl.	Water Pigmy-Weed (R)
<i>Crepis acuminata</i> Nuttall	Long-leaved Hawksbeard (R)
<i>Crepis occidentalis</i> Nuttall ssp. <i>occidentalis</i>	Western Hawksbeard (U)
<i>Crepis occidentalis</i> ssp. <i>pumila</i> (Rydb.) Babcock & Stebbins	Western Hawksbeard (R)
<i>Cressa truxillensis</i> Kunth var. <i>truxillensis</i>	Spreading Alkali-Weed (U)
<i>Cryptantha affinis</i> (A. Gray) E. Greene	Side-grooved Forget-Me-Not (R)
<i>Cryptantha barbiger</i> (A. Gray) E. Greene	Bearded Forget-Me-Not (R)
<i>Cryptantha corollata</i> (I.M. Johnston) I.M. Johnston	Crowned Forget-Me-Not (Type)
<i>Cryptantha flaccida</i> (Lehm.) E. Greene	Flaccid Forget-Me-Not (R)
<i>Cryptantha leiocarpa</i> (Fischer & C. Meyer) E. Greene	Coast Forget-Me-Not (R)
<i>Cryptantha maritima</i> (Greene) Greene	Seaside Forget-Me-Not (R)
<i>Cryptantha micrantha</i> (Torrey) I.M. Johnston	Eremocarya (R)
<i>Cryptantha micromeres</i> (A. Gray) E. Greene	Minute-flowered Forget (U)
<i>Cryptantha mohavensis</i> (Greene) Greene	Mojave Forget-Me-Not (R)
<i>Cryptantha pterocarya</i> (Torr.) E. Greene	Wing-nut Forget-Me-Not (R)
<i>Cryptantha sparsiflora</i> (E. Greene) E. Greene	Few-flowered Forget-Me-Not (R)
<i>Cryptantha torreyana</i> (A. Gray) E. Greene	Torrey Forget-Me-Not (U)
<i>Cryptantha traskiae</i> I.M. Johnston	Trask Forget-Me-Not (R)
<i>Cucurbita palmata</i> S. Watson	Coyote Melon (R)
<i>Cuscuta californica</i> var. <i>breviflora</i> Engelm.	California Dodder (R)
<i>Cuscuta campestris</i> Yuncker	Western Field Dodder (R)
<i>Cuscuta denticulata</i> Engelm.	Desert Dodder (R)
<i>Cuscuta indecora</i> Choisy var. <i>indecora</i>	Pretty Dodder (R)
<i>Cuscuta indecora</i> var. <i>neuropetala</i> (Engelm.) Hitchc.	Pretty Dodder (R)
<i>Cuscuta pacifica</i> Costea & M.A.R. Wright var. <i>pacifica</i>	Pacific Saltmarsh Dodder (R)
<i>Cuscuta salina</i> Englem. in W.H. Brewer, S. Watson, & A. Gray	Saltmarsh Dodder (R)
<i>Cycladenia humilis</i> var. <i>venusta</i> (Eastwood) Munz	Elegant Cycladenia (R)
<i>Cyperus acuminatus</i> Torrey & Hook.	Short-pointed Umbrella-sedge (R)
<i>Cyperus erythrorhizos</i> Muhlenb.	Red-root Flatsedge (R)
<i>Cyperus laevigatus</i> L.	Smooth Flatsedge (R)
<i>Cyperus odoratus</i> L.	Flatsedge (R)
<i>Cyperus squarrosus</i> L.	Awned Flatsedge (R)
<i>Cystopteris fragilis</i> (L.) Bernhardt	Brittle or Fragile Fern (U)
<i>Danthonia unispicata</i> (Thurb.) Vasey	One-spike Oat Grass (R)
<i>Deinandra clementina</i> (Brandege) B.G. Baldwin	Island or Catalina Tarplant (R)
<i>Deinandra kelloggii</i> (E. Greene) E. Greene	Kellogg Tarplant (R)
<i>Deinandra minthornii</i> (Jepson) B.G. Baldwin	Santa Susana Tarplant (R, Type) Listed R
<i>Delphinium gracilentum</i> Greene	Coast Larkspur (R)
<i>Delphinium gypsophilum</i> Ewan ssp. <i>gypsophilum</i>	Gypsum Larkspur (R) CNPS List 4
<i>Delphinium hesperium</i> A. Gray	Western or Coast Larkspur (R)
<i>Delphinium inopinum</i> (Jeps.) H.F. Lewis & Epling	Unexpected Larkspur (R) CNPS List 1B
<i>Delphinium parryi</i> ssp. <i>blochmaniae</i> (Greene) F.H. Lewis & Epling	Dune Larkspur (R) CNPS List 1B
<i>Delphinium parryi</i> ssp. <i>maritimum</i> (Davidson) M.J. Warnock	Maritime Larkspur (R)
<i>Delphinium parryi</i> ssp. <i>purpureum</i> (F. Lewis & Epling) M.J. Warnock	Mount Pinos Larkspur (U) CNPS List 4
<i>Delphinium patens</i> ssp. <i>hepaticoideum</i> Ewan	Spreading Larkspur (U)
<i>Delphinium patens</i> ssp. <i>montanum</i> (Munz) Ewan	Mountain Spreading Larkspur (R)
<i>Delphinium umbraculorum</i> F.H. Lewis & Epling	Umbrella Larkspur (R) CNPS List 1B

Scientific Name

Common Name

<i>Deschampsia cespitosa</i> (L.) Beauv. ssp. <i>cespitosa</i>	Tufted Hairgrass (R)
<i>Deschampsia danthanooides</i> (Trin.) Munro ex Bentham	Annual Hairgrass (R)
<i>Descurainia obtusa</i> ssp. <i>adenophora</i> (Wooton & Standley) Detl.	Desert Tansy Mustard (R)
<i>Descurainia pinnata</i> ssp. <i>glabra</i> (Wooton & Standl.) Detl.	Naken Western Tansy Mustard (R)
<i>Descurainia pinnata</i> ssp. <i>halicotorum</i> (Cockerell) Detl.	Western Tansy Mustard (R)
<i>Descurainia pinnata</i> ssp. <i>menziesii</i> (DC.) Detl.	Menzies Tansy Mustard (U)
<i>Dicentra ochroleuca</i> Engelm.	White Eardrops, Yellow Dicentra (R)
<i>Dicentra pauciflora</i> S. Watson	Few-flowered Bleeding Heart (R)
<i>Dichelostemma congestum</i> (Sm.) Kunth	Ookow (R)
<i>Dichondra occidentalis</i> House	Western Dichondra (R) CNPS List 4
<i>Dieteria [Machaeranthera] canescens</i> (Pursh) Torrey ssp. <i>canescens</i>	Hoary-Aster (U)
<i>Dithyrea maritima</i> (A. Davids.) Davidson	Beach Spectacle-pod (R)
<i>Dodecatheon alpinum</i> (A. Gray) E. Greene	Alpine Shooting Star (R)
<i>Dodecatheon clevelandii</i> ssp. <i>insulare</i> H.L. Thompson	Island Shooting Star (R)
<i>Dodecatheon clevelandii</i> ssp. <i>patulum</i> (Greene) Thompson	Lowland Padre Shooting Star (R)
<i>Dodecatheon clevelandii</i> ssp. <i>sanctarum</i> (E. Greene) Abrams	Cleveland Shooting Star (U)
<i>Downingia bella</i> Hoover	Hoover Downingia (R)
<i>Downingia pulchella</i> (Lindl.) Torrey	Flat-face Downingia (R)
<i>Draba cuneifolia</i> T. & G.	Wedgeleaf Draba (R)
<i>Draba verna</i> L.	Vernal Whitlow-grass (R)
<i>Drymocallis glandulosa</i> ssp. <i>wrangelliana</i> (Fisch. & Avé-Lall.) Ertter	Wrangell's Cinquefoil (R)
<i>Dudleya abramsii</i> ssp. <i>parva</i> (Rose & Davids.) J. Bartel	Conejo Live-forever (R) Listed T
<i>Dudleya blochmaniae</i> (Eastw.) Moran ssp. <i>blochmaniae</i>	Blochman Live-forever (R) CNPS List 1B
<i>Dudleya caespitosa</i> (Haw.) Britt. & Rose	Sea Lettuce (R)
<i>Dudleya cymosa</i> (Lem.) Britton & Rose ssp. <i>cymosa</i>	Canyon Live-forever (R)
<i>Dudleya cymosa</i> ssp. <i>marcescens</i> Moran	Marcescent Live-forever (R, Type) Listed T
<i>Dudleya cymosa</i> ssp. <i>ovatifolia</i> (Britt.) Moran	Santa Monica Mtns. Live-forever (R) Listed T
<i>Dudleya cymosa</i> ssp. <i>pumila</i> (Rose) K. Nakai	Pygmy Live-forever (U)
<i>Dudleya farinosa</i> (Lindley) Britt. & Rose	Farinose Live-forever (R)
<i>Dudleya pulverulenta</i> ssp. <i>arizonica</i> (Rose) Moran	Chalky Live-forever (R)
<i>Dudleya verityi</i> N. Nakai	Verity Live-forever (R) Listed T
<i>Dudleya virens</i> (Rose) Moran	Bright Green Live-forever (R)
<i>Eastwoodia elegans</i> Brandegees	Yellow Mock Aster (R)
<i>Echinochloa crus-galli</i> (L.) Link. ssp. <i>crus-galli</i> (L.) Link.	Gulf Barnyard Grass (R)
<i>Echinodorus berteroi</i> (Spreng.) Fassett	Bur Head (R)
<i>Eclipta prostrata</i> (L.) L.	False Daisy (R)
<i>Elatine brachysperma</i> Gray	Slender Waterwort (R)
<i>Elatine californica</i> Gray	California Waterwort (R)
<i>Eleocharis acicularis</i> var. <i>gracilenscens</i> Svenson	Graceful Spikerush (R)
<i>Eleocharis bella</i> (Piper) Svenson	Bella Spikerush (R)
<i>Eleocharis bernardina</i> Munz & Johnston	Few-flowered Club-rush (R)
<i>Eleocharis erythropoda</i> Steud.	Bald Spikerush (R)
<i>Eleocharis montevidensis</i> Kunth	Sand Spikerush (R)
<i>Eleocharis quinqueflora</i> (Hartmann) O. Schwarz	Few-flowered Spikerush (R)
<i>Eleocharis rostellata</i> (Torrey) Torrey	Beaked Spikerush (R)
<i>Eleocharis suksdorfiana</i> Beauv.	Suksdorf's Spikerush (R)
<i>Elodea canadensis</i> Rich.	Common Waterweed (R)
<i>Elymus glaucus</i> ssp. <i>jepsonii</i> (Burt Davy) Gould	Jepson Blue or Woodland Wildrye (R)
<i>Elymus xhanseni</i> Scribn.	Hansen's Wildrye (R)
<i>Elymus stebbinsii</i> (Scribn. & J.G. Smith) Gould	Wheatgrass (R)
<i>Elymus trachycaulus</i> (Link) Shinn. ssp. <i>trachycaulus</i>	Slender Wheatgrass (R)
<i>Elymus trachycaulus</i> ssp. <i>subsecundus</i> (Link) Gould	Slender Wheatgrass (R)
<i>Emmenanthe penduliflora</i> var. <i>rosea</i> Brand	Rose Whispering Bells (R)
<i>Encelia actoni</i> Elmer	Acton Brittlebush (U)
<i>Encelia farinosa</i> Torrey & A. Gray	Brittlebush, Incienso (R)
<i>Encelia frutescens</i> (Gray) Gray	Brittlebush, Incienso (R)

Scientific Name

Encelia virginensis Nelson
Enemion occidentale (H. & A.) J.R. Drummond & Hutchinson
Ephedra californica S. Watson
Ephedra nevadensis S. Watson
Epilobium brachycarpum C. Presl
Epilobium campestre (Jeps.) Hoch & W.L. Wagner
Epilobium canum ssp. *latifolium* (Hook.) Raven
Epilobium ciliatum ssp. *glandulosum* (Lehm.) P. Hoch & Raven
Epilobium densiflorum (Lindley) P. Hoch & Raven
Epilobium foliosum (T. & G.) Suksd.
Epilobium glaberrinum Barbey ssp. *glaberrinum*
Epilobium oregonense Hausskn.
Epilobium torreyi (S. Watson) P. Hoch & Raven
Epipactis gigantea Hook.
Equisetum arvense L.
Equisetum hyemale var. *affine* (Engelm.) Calder & R.L. Taylor
Equisetum telmateia ssp. *braunii* (Milde) R.L. Hauke
Equisetum Xferrissii Clute
Eragrostis mexicana var. *virescens* (C. Presl) Koch & E. Sanchez
Eragrostis pectinacea (Michx.) Nees var. *pectinacea*
Eremalche exilis (A. Gray) E. Greene
Eremalche parryi (E. Greene) E. Greene ssp. *parryi*
Eriastrum densifolium (Benth.) Mason ssp. *densifolium*
Eriastrum densifolium ssp. *mohavense* (Craig) H. Mason
Eriastrum eremicum (Jeps.) H. Mason ssp. *eremicum*
Eriastrum filifolium (Nutt.) Wooton & Standl.
Eriastrum hooveri (Jepson) H. Mason
Eriastrum pluriflorum (A.A. Heller) H. Mason
Eriastrum sapphirinum ssp. *dasyanthem* (Brand) H. Mason
Ericameria arborescens (A. Gray) E. Greene
Ericameria cooperi (Gray) H.M. Hall var. *cooperi*
Ericameria cuneata (Gray) McClatchie var. *cuneata*
Ericameria cuneata var. *spathulata* (A. Gray) H.M. Hall
Ericameria ericoides (Less.) Jeps. ssp. *ericoides*
Ericameria nauseosa var. *bernardina* (Hall) Nesom & Baird
Ericameria nauseosa var. *speciosa* (Nutt.) Nesom & Baird
Ericameria palmeri var. *pachylepis* (H.M. Hall) Nesom
Ericameria parryi var. *aspera* (Greene) G.L. Newson & G.I. Baird
Ericameria pinifolia (Gray) H.M. Hall
Ericameria teretifolia (Durand & Hilg.) Jepson
Erigeron breweri var. *covillei* (Greene) G. Neswom
Erigeron glaucus Ker-Gawler
Eriodictyon californicum (Hooker & Arnott) Torrey
Eriodictyon crassifolium Benthham var. *crassifolium*
Eriodictyon traskiae Eastw.
Eriodictyon trichocalyx A.A. Heller var. *trichocalyx*
Eriogonum arborescens Greene
Eriogonum covilleianum Eastw.
Eriogonum crocatum Davidson
Eriogonum deflexum var. *baratum* (Elmer) Reveal
Eriogonum elegans Greene
Eriogonum gracillimum S. Watson
Eriogonum grande Greene var. *grande*
Eriogonum grande Greene var. *rubescens* Munz
Eriogonum grande Greene var. *timorum* Reveal
Eriogonum hirtiflorum S. Watson

Common Name

Brittlebush (R)
 Western Meadow-rue (R)
 California Desert Tea, Cañatillo (R)
 Nevada Ephedra or Mormon-tea (R)
 Panicked Willow-herb (U)
 Smooth Spike-primrose (R)
 Broad-leaved California Fuchsia (U)
 Sticky Northern Willow-herb (R)
 Dense-flowered Spike-primrose (R)
 Leafy Spike-primrose (R)
 Waxy Willow-herb (R)
 Oregon Spike-primrose (R)
 Brook Spike-primrose (R)
 Stream Orchid (U)
 Common or Field Horsetail (U)
 Common or Giant Scouring Rush (U)
 Giant Horsetail (U)
 Ferris Horsetail (R)
 Orcutt Lovegrass (U)
 Tufted Lovegrass (U)
 White-flowered Mallow (R)
 Parry Mallow (U)
 Woolly Star (R)
 Mojave Woolly Star (R)
 Woolly Star (R)
 Threadleaf Woolly Star (R)
 Hoover Woolly Star (R) CNPS List 4
 Woolly Star (R)
 Shaggy-flowered Sapphire Woolly Star (R)
 Golden-fleece (R)
 Cooper Goldenbush (R)
 Wedgeleaf Goldenbush (U)
 Spatulate-leaved Goldenbush (R)
 Heatherleaf Goldenbush (U)
 San Bernardino Rubber Rabbitbrush (R)
 White-stemmed Rubber Rabbitbrush (R)
 Palmer Goldenbush (R)
 Parry Rabbitbrush (R)
 Pine Goldenbush (R)
 Round-leaved Rabbitbrush (R)
 Fleabane Daisy (R)
Seaside Daisy (R)
 California Yerba Santa (R)
 Thicketleaf Yerba Santa (U)
 Trask Yerba Santa (R)
 Yerba Santa (U)
Arborescent Buckwheat (U)
 Coville Buckwheat (R)
 Conejo or Saffron Buckwheat (R, Type)
 Flat-crown Buckwheat (R, Type)
 Elegant Buckwheat (U)
 Slender Buckwheat (R)
 Island Buckwheat (U)
 Red Island Buckwheat (U)
 San Nicolas Island Buckwheat (U)
 Hairy-flowered Buckwheat (U)

Scientific Name

Common Name

<i>Eriogonum hooveri</i> (Reveal) Reveal	Hoover's Little Trumpet (U)
<i>Eriogonum inerme</i> (S. Watson) Jeps.	Unarmed Buckwheat (U)
<i>Eriogonum kennedyi</i> ssp. <i>alpigenum</i> (Munz & Johnston) Munz & Johnston	Alpine Kennedy Buckwheat (R) CNPS List 1B
<i>Eriogonum kennedyi</i> var. <i>austromontanum</i> Munz & I.M. Johnston	Southern Mountain Buckwheat (R) CNPS List 1B
<i>Eriogonum latifolium</i> Smith	Coast or Seaside Buckwheat, Tibinagua (R)
<i>Eriogonum molestum</i> Greene	Pine Buckwheat (U)
<i>Eriogonum nudum</i> var. <i>auriculatum</i> (Benth.) J.P. Tracy ex Jeps.	Big-eared Wild Buckwheat (R)
<i>Eriogonum ordii</i> S. Watson	Ord Buckwheat (U)
<i>Eriogonum ovalifolium</i> Nutt. var. <i>ovalifolium</i>	Cushion Wild Buckwheat (R)
<i>Eriogonum parvifolium</i> var. <i>paynei</i> (Wolf ex Munz) Reveal	Payne Dune Buckwheat (U, Type)
<i>Eriogonum pusillum</i> T. & G.	Puny Buckwheat (R)
<i>Eriogonum spergulinum</i> var. <i>reddingianum</i> (Jones) J.T. Howell	Redding's Wild Buckwheat (U)
<i>Eriogonum spergulinum</i> A. Gray var. <i>spergulinum</i>	Spurry Wild Buckwheat (R)
<i>Eriogonum thurberi</i> Torrey	Thurber's Wild Buckwheat (R)
<i>Eriogonum umbellatum</i> var. <i>bahiiforme</i> (T. & G.) Jepson	Sulphur-flower Buckwheat (U)
<i>Eriogonum umbellatum</i> var. <i>canifolium</i> Reveal	Sulphur Buckwheat (R)
<i>Eriogonum umbellatum</i> var. <i>furcosum</i> Reveal	Sulphur Buckwheat (R)
<i>Eriogonum umbellatum</i> var. <i>subaridum</i> S. Stokes	Sulphur Buckwheat (R)
<i>Eriogonum vimineum</i> Benth.	Wicker-stem Wild Buckwheat (R)
<i>Eriogonum viridescens</i> A. Heller	Green Buckwheat (U)
<i>Eriogonum wrightii</i> var. <i>membranaceum</i> Jeps.	Sheathed Wright Buckwheat (R)
<i>Eriogonum wrightii</i> var. <i>trachyonum</i> (Torr. ex Benth.) Jeps.	Rough-node Bastardsage (R)
<i>Eriophyllum confertiflorum</i> var. <i>tanacetiflorum</i> (E. Greene) Jepson	Tansy-leaved Woolly Yarrow (R) CNPS 4.2
<i>Eriophyllum jepsonii</i> Greene	Jepson Woolly Yarrow (R)
<i>Eriophyllum staechadifolium</i> Lagasca	Seaside Woolly Sunflower (U)
<i>Eryngium vaseyi</i> J. Coulter & Rose	Coyote Thistle or Button-celery (R)
<i>Erysimum insulare</i> Greene ssp. <i>insulare</i>	Island Wallflower (U)
<i>Erysimum insulare</i> ssp. <i>suffrutescens</i> (Abrams) R.A. Price	Island Wallflower (R)
<i>Eschscholzia hypocoides</i> Bentham	Gypsum Poppy (R)
<i>Eschscholzia lemmonii</i> Greene ssp. <i>lemmonii</i>	Lemmon Poppy (R) CNPS List 4
<i>Eschscholzia minutiflora</i> S. Watson	Tiny-flowered Poppy (R)
<i>Eschscholzia ramosa</i> (Greene) Greene	Island Poppy (R)
<i>Euphorbia palmeri</i> S. Watson var. <i>palmeri</i>	Wood Spurge (R)
<i>Euphorbia spathulata</i> Lam.	Spurge (R)
<i>Festuca rubra</i> L.	Red Fescue (R)
<i>Fimbristylis thermalis</i> S. Watson	Hot-Springs Fimbristylis (R)
<i>Forestiera pubescens</i> Nutt.	Desert Olive, Dwarf Swamp Privet (U)
<i>Fraxinus velutina</i> Torrey	Velvet or Arizona Ash (U)
<i>Fritillaria agrestis</i> E. Greene	Stink Bells (R) CNPS List 4
<i>Fritillaria biflora</i> Lindley var. <i>biflora</i>	Chocolate Lily, Mission Bells (U)
<i>Fritillaria ojaiensis</i> A. Davidson	Ojai Fritillary (R, Type) CNPS List 1B
<i>Fritillaria pinetorum</i> A. Davidson	Pine Fritillary (R)
<i>Funastrum cynanchoides</i> var. <i>hartwegii</i> (Vail) Krings	Climbing Milkweed (R)
<i>Galium angustifolium</i> ssp. <i>foliosum</i> (Hilend & Howell) Dempster & Stebb.	Channel Islands Bedstraw (R, Type)
<i>Galium bifolium</i> S. Watson	Low Mountain Bedstraw (R)
<i>Galium californicum</i> Hooker & Arnott ssp. <i>californicum</i>	California Bedstraw (R)
<i>Galium cliftonsmithii</i> (Dempster) Dempster & Stebb.	Santa Barbara Bedstraw (R, CNPS 4)
<i>Galium trifidum</i> var. <i>pacificum</i> Wiegand	Coastal Bedstraw (R)
<i>Galium triflorum</i> Michaux	Sweet-scented Bedstraw (R)
<i>Garrya elliptica</i> Lindley	Silk-tassel Bush (R)
<i>Garrya flavescens</i> S. Watson ssp. <i>flavescens</i>	Silk-tassel Bush (R)
<i>Gaura coccinea</i> Pursh	Wild Honeysuckle, Linda Tarde (U)
<i>Gayophytum heterozygum</i> H. Lewis & J. Szweykowski	Hybrid Gayophytum (R)
<i>Gayophytum humile</i> A.L. Juss.	Low Gayophytum (R)
<i>Gayophytum racemosum</i> T. & G.	Black-foot Gayophytum (R)
<i>Geranium californicum</i> G. Jones & F. Jones	California Geranium (R)

Scientific Name

Common Name

<i>Geranium viscosissimum</i> Fischer & C. Meyer	Sticky Cranesbill (R)
<i>Gilia achilleifolia</i> Benth. ssp. <i>achilleifolia</i>	California or Yarrow-leaved Gilia (U)
<i>Gilia achilleifolia</i> Benth. ssp. <i>multicaulis</i> (Benth.) V. & A. Grant	Many-stemmed California Gilia (R)
<i>Gilia aliquanta</i> A. D. Grant & V. E. Grant	Puff-calyx Gilia (R)
<i>Gilia austro-occidentalis</i> (A.D. & V.E. Grant) A.D. & V.E. Grant	Southwestern Gilia (R)
<i>Gilia brecciarum</i> M.E. Jones ssp. <i>brecciarum</i>	Breccia Gilia (R)
<i>Gilia brecciarum</i> ssp. <i>jacens</i> (A. Grant & V. Grant) Day	Purple-flowered Breccia Gilia (R)
<i>Gilia capillaris</i> Kellogg	Miniature or Smooth-leaved Gilia (R)
<i>Gilia interior</i> (Mason & A. Grant) A. Grant	Slender-flowered Gilia (R)
<i>Gilia latiflora</i> (Gray) Gray ssp. <i>latiflora</i>	Broad-flowered Gilia (R)
<i>Gilia latiflora</i> ssp. <i>cuyamensis</i> A. & V. Grant	Cuyama Gilia (U) CNPS List 4
<i>Gilia latiflora</i> ssp. <i>davyi</i> (Milliken) A. & V. Grant	Davy Broad-flowered Gilia (R)
<i>Gilia leptantha</i> ssp. <i>pinetorum</i> A. & V. Grant	Gabriel Trumpet (U) CNPS List 4
<i>Gilia malior</i> A.G. Day & V.E. Grant	Scrub Gilia (R)
<i>Gilia minor</i> A.D. Grant & V.E. Grant	Little Gilia (U)
<i>Gilia modocensis</i> Eastwood	Modoc Gilia (R)
<i>Gilia nevinii</i> Gray	Nevin Gilia (U)
<i>Gilia ochroleuca</i> M.E. Jones ssp. <i>ochroleuca</i>	Volcanic Gilia (R)
<i>Gilia ochroleuca</i> ssp. <i>exilis</i> (Gray) A.& V. Grant	Volcanic Gilia (R)
<i>Gilia sinuata</i> Benth.	Sinuate Gilia (R)
<i>Gilia tenuiflora</i> Benth. ssp. <i>tenuiflora</i>	Greater Yellowthroat Gilia (R)
<i>Gilia tetrabreccia</i> A. & V. Grant	Mount Piños Gilia (U)
<i>Gilia transmontana</i> (H. Mason & A. Grant) A. & V. Grant	Desert Gilia (U)
<i>Githopsis diffusa</i> A. Gray ssp. <i>diffusa</i>	Southern Bluecup (R)
<i>Grindelia camporum</i> E. Greene var. <i>camporum</i>	Great Valley Gumplant (R)
<i>Grindelia camporum</i> var. <i>bracteosa</i> (J.T. Howell) M.A. Lane	Bracted Gumplant (U)
<i>Grindelia hirsutula</i> Hook. & Arn. var. <i>hirsutula</i>	Hirsute Gumplant (U, Type)
<i>Grindelia stricta</i> var. <i>platyphylla</i> (Greene) M.A. Lane	Island Gumplant (R)
<i>Grindelia Xlatifolia</i> Kellogg ssp. <i>latifolia</i>	Coastal Gumplant (R)
<i>Gutierrezia sarothrae</i> (Pursh) Britton & Rusby	Broom Snakeweed, Matchweed (U)
<i>Hazardia detonsa</i> (Greene) Greene	Island Goldenbush (U) CNPS 4
<i>Helenium bigelovii</i> Gray	Bigelow Sneezeweed (U)
<i>Helenium puberulum</i> DC.	Rosilla (U)
<i>Helianthemum scoparium</i> Nutt.	Peak Rushrose (U)
<i>Helianthus gracilentus</i> Gray	Wild Mountain or Slender Sunflower (R)
<i>Hemizonella minima</i> (Gray) Gray	Hemizonella (U)
<i>Hesperevax sparsiflora</i> (A. Gray) E. Greene var. <i>sparsiflora</i>	Few-leaved Evax (R)
<i>Hesperochiron californicus</i> (Benth.) S. Watson	California Hesperochiron (R)
<i>Hesperochiron pumilus</i> (Griseb.) Porter	Hesperochiron (R)
<i>Hesperocnide tenella</i> Torrey	Western Nettle (R)
<i>Hesperoyucca whipplei</i> ssp. <i>percursa</i>	Our Lord's Candle (R)
<i>Heterocodon rariflorum</i> Nuttall	Western Pearl-flower (R)
<i>Heterotheca psammophila</i> B. Wagenkn.	Camphor Weed (R)
<i>Heterotheca sessiliflora</i> ssp. <i>camphorata</i> (Eastw.) Semple	Camphor Goldenaster (R)
<i>Heterotheca sessiliflora</i> (Nuttall) Shinnars ssp. <i>sessiliflora</i>	Beach Goldenaster (R)
<i>Heterotheca villosa</i> (Pursh) Shinnars var. <i>hispida</i> (Hook.) V. Harms	Woolly Goldenaster (R)
<i>Heuchera abramsii</i> Rydb.	Abrams Alumroot (R)
<i>Heuchera cespitosa</i> Eastw.	Alumroot (R)
<i>Heuchera elegans</i> Abrams	Urn-flowered Alumroot (R)
<i>Heuchera maxima</i> Greene	Island Alumroot (R)
<i>Hieracium albiflorum</i> Hooker	White-flowered Hawkweed (R)
<i>Hieracium argutum</i> Nuttall	Southern California Hawkweed (U)
<i>Hieracium horridum</i> Fries	Shaggy or Woolly Hawkweed (R)
<i>Hoffmannseggia glauca</i> (Ortega) Eifert	Pig-nut, Hog Potato (R)
<i>Hoita orbicularis</i> (Lindley) Rydb.	Round-leaved Hoita (R)
<i>Hollisteria lanata</i> S. Watson	Hollisteria (R)

Scientific Name

Holocarpha heermannii (E. Greene) Keck
Holodiscus discolor (Pursh) Maxim.
Holodiscus microphyllus Rydb. var. *macrophyllus*
Hordeum brachyantherum Nevski ssp. *brachyantherum*
Hordeum depressum (Scribner & J.G. Smith) Rydb.
Hordeum intercedens Nevski
Horkelia cuneata Lindley ssp. *cuneata*
Horkelia cuneata ssp. *puberula* (Greene) Keck
Horkelia rydbergii Elmer
Hulsea heterochroma Gray
Hulsea vestita ssp. *gabrielensis* Wilken
Hutchinsia procumbens (L.) Desv.
Hydrocotyle verticillata Thunb.
Hypericum formosum var. *scouleri* (Hook.) J. Coulter
Imperata brevifolia Vasey
Iris missouriensis Nuttall
Isocoma acradenia (E. Greene) E. Greene
Isocoma menziesii var. *sedoides* (E. Greene) G. Nesom
Isoëtes howellii Engelm. var. *howellii*
Isoëtes howellii var. *minima* (A.A. Eaton) N.E. Pfeiffer
Isoëtes nuttallii A. Braun
Isolepis cernua (Vahl) Roemer & Schultes var. *cernua*
Ivesia santolinoides A. Gray
Ivesia saxosa (Greene) B. Ertter
Jaumea carnosa (Less.) Gray
Jensia yosemitana (Parry ex A. Gray) B.G. Baldwin
Jepsonia malvifolia (Greene) Small

Juglans californica S. Watson var. *californica*
Juncus acutus ssp. *leopoldii* (Parl.) Snogerup
Juncus arcticus ssp. *vallicola* (Rydb.) Lint
Juncus balticus Willd. var. *ater* (Rydb.) Snogerup
Juncus bufonius L. var. *bufonius*
Juncus bufonius var. *occidentalis* F.J. Hermann
Juncus confusus Cov.
Juncus dubius Engelm.
Juncus effusus ssp. *pacificus* (Fern. & Wieg.) H.L. Lint
Juncus ensifolius Wikström var. *ensifolius*
Juncus macrandrus Cov.
Juncus macrophyllus Cov.
Juncus nevadensis S. Watson
Juncus occidentalis (Coville) Wiegand
Juncus oxymiris Engelm.
Juncus patens E. Meyer
Juncus phaeocephalus var. *paniculatus* Engelm.
Juncus rugulosus Engelm.
Juncus textilis Buchenau
Juncus torreyi Coville
Juniperus occidentalis Hook.
Krascheninnikovia lanata (Pursh) A.D.J. Meeuse & Smit
Lastarriaea coriacea (Goodman) Hoover
Lasthenia coronaria (Nutt.) Ornduff
Lasthenia ferrisiae Ornduff
Lasthenia glabrata ssp. *coulteri* (Gray) Ornduff
Lathyrus vestitus ssp. *bolanderi* (S. Watson) C. Hitchc.
Lathyrus vestitus ssp. *laetiflorus* (Greene) Broich
Lathyrus vestitus ssp. *laevicarpus* Broich

Common Name

Heermann Tarplant (R)
Oceanspray, Cream Bush (R)
Rock Spiraea (R)
Meadow Barley (U)
Low Barley (R)
Vernal Barley (U)
Wedgeleaf Horkelia (R)
Fuzzy Horkelia (R)
Rydberg Horkelia (U)
Red-rayed Hulsea (R)
San Gabriel Hulsea (R)
Desert Hutchinsia (U)
Marsh Pennywort (R)
St. John's Wort (R)
Satintail (R)
Western Blue Flag [Iris] (U)
Desert Goldenbush (R)
Coastal Goldenbush (U)
Howell Quillwort (R)
Small Howell Quillwort (R)
Nuttall Quillwort (R)
Low Clubrush (U)
Mousetail Ivesia (R)
Five-finger Silverweed (R)
Fleshy Jaumea (U)
Yosemite Tarplant (R)
Island Jepsonia (R)

Southern California Black Walnut (U) CNPS List 4
Spiny Rush (U) CNPS List 4
Valley Baltic Rush (R)
Rocky Mountain Rush (R)
Common Toad Rush (R)
Western Toad Rush (R)
Colorado Rush (R)
Mariposa Rush (U)
Pacific Rush (U)
Swordleaf or Three-stamen Rush (R)
Long-anthered Rush (R)
Large-leaf Rush (U)
Sierra Rush (R)
Western Rush (R)
Iris-leaved or Pointed Rush (R)
Spreading Rush (R)
Brown-fruited Rush (R)
Wrinkled Rush (U)
Indian or Basket Rush (U)
Torrey Rush (R)
Western Juniper (R)
Winter Fat (R)
Lastarriaea (R)
Crown-pappus Goldfields (R)
Ferris Goldfields (R)
Rayless Goldfields (R)
White-petaled Peavine (R)
Pacific Peavine (U)
Pacific Peavine (U, Type)

Scientific Name

Common Name

<i>Lavatera assurgentiflora</i> Kellogg ssp. <i>assurgentiflora</i>	Malva Rose (R)
<i>Layia glandulosa</i> ssp. <i>lutea</i> Keck	Yellow Layia (U)
<i>Layia glandulosa</i> ssp. <i>rosea</i> Gray	Rose Layia (R, Type)
<i>Layia heterotricha</i> (DC.) Hook. & Arn.	Pale-yellow Layia (R) CNPS List 1B
<i>Layia pentachaeata</i> ssp. <i>albida</i> Keck	White Tidy Tips (R)
<i>Layia platyglossa</i> (Fischer & C. Meyer) A. Gray	Tidy Tips (U)
<i>Lemna aequinoctialis</i> Welw.	Lesser Duckweed (R)
<i>Lemna gibba</i> L.	Gibbose Duckweed (R)
<i>Lemna minor</i> L.	Duckweed (R)
<i>Lemna minuscula</i> Herter	Tiny Duckweed (R)
<i>Lemna turionifera</i> Landolt	Duckweed (R)
<i>Lemna valdiviana</i> Philippi	Big Duckweed (U)
<i>Lepechinia calycina</i> (Bentham) Epling	Pitcher Sage (R)
<i>Lepechinia fragrans</i> (E. Greene) Epling	Fragrant Pitcher Sage (R)
<i>Lepechinia rossii</i> S. Boyd & O. Mistretta	Ross' Pitcher Sage (R)
<i>Lepidium campestre</i> (L.) R. Br.	Peppergrass (R)
<i>Lepidium dictyotum</i> A. Gray var. <i>dictyotum</i>	Veiny Peppergrass (R)
<i>Lepidium dictyotum</i> var. <i>acutidens</i> A. Gray	Short-toothed Peppergrass
<i>Lepidium lasiocarpum</i> Nutt. var. <i>lasiocarpum</i>	Hairy-pod Peppergrass (U)
<i>Lepidium oblongum</i> Small var. <i>oblongum</i>	Oblong Peppergrass (U)
<i>Lepidium strictum</i> (S. Watson) Rattan	Prostrate Peppergrass (R)
<i>Lepidium virginicum</i> var. <i>pubescens</i> (Greene) Thell.	Hairy Poorman's Peppergrass (R)
<i>Lepidium virginicum</i> var. <i>menziesii</i> (DC.) Thellung	Hairy Poorman's Peppergrass (R, CNPS 1B.2)
<i>Leptodactylon pungens</i> ssp. <i>hallii</i> (Parish) H. Mason	Granite Prickly Phlox (R)
<i>Leptodactylon pungens</i> ssp. <i>pulchriflorum</i> (Brand) H. Mason	Granite Prickly Phlox (U)
<i>Leptosiphon androsaceus</i> Bentham	Baby Tears (R)
<i>Leptosiphon bicolor</i> Nuttall	Bicolored Linanthus (R)
<i>Leptosiphon breviculus</i> (A. Gray) J.M. Porter & L.A. Johnson	Short-stemmed Linanthus (R)
<i>Leptosiphon ciliatus</i> (Benth.) Jepson	Whisker Brush (R)
<i>Leptosiphon liniflorus</i> (Bentham) J.M. Porter & L.A. Johnson	Narrow Flaxflower (U)
<i>Leptosiphon nudatus</i> (E. Greene) J.M. Porter & L.A. Johnson	Tehachapi Linanthus or Flaxflower (R)
<i>Leptosiphon pygmaeus</i> ssp. <i>continentalis</i> (Raven) Porter & Johnson	Continental Pygmy Linanthus (R)
<i>Leptosyne californica</i> Nuttall	California Coreopsis (R)
<i>Lessingia glandulifera</i> var. <i>peirsonii</i> (J.T. Howell) Markos	Peirson's Lessingia (R) CNPS List 4
<i>Lessingia leptoclada</i> A. Gray	Sierra Lessingia (R)
<i>Lessingia pectinata</i> var. <i>tenuipes</i> (J.T. Howell) Markos	Sticky Lessingia (R)
<i>Lessingia tenuis</i> (Gray) Cov.	Spring Lessingia (U, Type) CNPS List 4
<i>Lewisia rediviva</i> ssp. <i>minor</i> (Rydb.) Munz	Small Bitterroot (U)
<i>Leymus cinereus</i> A. Löve	Cespitose Wildrye (R)
<i>Leymus Xhansenii</i> Scribner	Hansen's Wildrye (R)
<i>Lilium humboldtii</i> ssp. <i>ocellatum</i> (Kellogg) Thorne	Ocellated Humboldt Lily (U) CNPS List 4
<i>Lilium pardalinum</i> Kellogg ssp. <i>pardalinum</i>	Leopard Lily (R)
<i>Limonium californicum</i> (Boiss.) A.A. Heller	Marsh Rosemary (R)
<i>Limosella acaulis</i> Sesse & Mocino	Tufted Mudwort (R)
<i>Linanthus bigelovii</i> (Gray) Greene	Bigelow Linanthus (R)
<i>Linanthus dianthiflorus</i> (Benth.) Greene	Ground Pink (U)
<i>Linanthus parryae</i> (Gray) Greene	Parry Linanthus (R)
<i>Linaria canadensis</i> (L.) Dum.-Cours. var. <i>canadensis</i>	Toadflax (R)
<i>Linaria canadensis</i> (L.) Dum.-Cours. var. <i>texana</i> (Scheele) Pennell	Toadflax (U)
<i>Linum lewisii</i> Pursh	Western Blue Flax (U)
<i>Lipocarpa micrantha</i> (M. Vahl.) G.C. Tucker	Tiny Lipocarpa (R)
<i>Notholithocarpus densiflorus</i> (Hook. & Arn.) Manos, C.H. Cannon, &	S. Oh var. <i>densiflorus</i> Tanbark Oak (R)
<i>Lithophragma bolanderi</i> Gray	Bolander Star (R)
<i>Lithophragma cymbalaria</i> T. & G.	Mission Star (U)
<i>Lithophragma heterophyllum</i> (Hook. & Arn.) T. & G.	Hill Star (R)
<i>Lithophragma parviflorum</i> (Hook.) T. & G. var. <i>parviflorum</i>	Prairie Star (R)

Scientific Name

Common Name

<i>Lobelia dunnii</i> var. <i>serrata</i> (Gray) McVaugh	Rothrock (Ojai) Lobelia (Type Locality only)
<i>Loeflingia squarrosa</i> Nuttall var. <i>squarrosa</i>	California Loeflingia (R)
<i>Loeseliastrum schottii</i> S. Timbrook	Schott Loeseliastrum (R)
<i>Lomatium californicum</i> (T. & G.) Mathias & Constance	California Lomatium (R)
<i>Lomatium caruifolium</i> (H.& A.) J.M. Coult. & Rose var. <i>caruifolium</i>	Alkali Desertparsley (R)
<i>Lomatium dissectum</i> var. <i>multifidum</i> (T.& G.) Mathias & Constance	Carrotleaf Biscuitroot (R)
<u><i>Lomatium insulare</i> (Eastw.) Munz</u>	<u>San Nicolas Island Lomatium</u> (R)
<i>Lomatium lucidum</i> (T. & G.) Jeps.	Shiny Lomatium (R)
<i>Lomatium macrocarpum</i> (T. & G.) J. Coulter & Rose	Large-fruited Lomatium (R)
<i>Lomatium mohavense</i> (Coult. & Rose) Coult. & Rose ssp. <i>mohavense</i>	Desert-parsley (U)
<i>Lomatium parvifolium</i> (Hook. & Arn.) Jeps.	Small-leaved Lomatium (R)
<i>Lomatium utriculatum</i> (T. & G.) Coulter & Rose	Foothill Lomatium (U)
<i>Lonicera interrupta</i> Benth.	Chaparral Honeysuckle (U)
<i>Lonicera subspicata</i> Hooker & Arnott var. <i>subspicata</i>	Santa Ynez Mountains Honeysuckle (R)
<u><i>Lotus argophyllus</i> ssp. <i>argenteus</i> Dunkle</u>	<u>Silver Deervetch</u> (R)
<u><i>Lotus argophyllus</i> ssp. <i>nivius</i> (E. Greene) Ottley</u>	<u>Santa Cruz Island Silverhosackia</u> (R)
<i>Lotus crassifolius</i> (Benth.) Greene var. <i>crassifolius</i>	Broad-leaved Hosackia (U)
<u><i>Lotus dendroideus</i> (Greene) Greene var. <i>dendroideus</i></u>	<u>Island Broom</u> (R)
<u><i>Lotus dendroideus</i> var. <i>veatchii</i> (Greene) Isley</u>	<u>San Miguel Island Deerweed</u> (R)
<i>Lotus hamatus</i> Greene	Grab Hosackia or Lotus (R)
<i>Lotus heermanii</i> (Durand & Hilg.) Greene var. <i>heermanii</i>	Heerman Lotus or Hosackia (R)
<i>Lotus heermanii</i> var. <i>orbicularis</i> (Gray) Isley	Heerman Lotus (R)
<i>Lotus junceus</i> (Benth.) Greene	Lotus (R)
<i>Lotus micranthus</i> Benth.	Tiny Lotus (R)
<i>Lotus nevadensis</i> (S. Watson) Greene var. <i>davidsonii</i> (Greene) Isley	Suphur-flowered Hosackia (U)
<i>Lotus nevadensis</i> (S. Watson) Greene var. <i>nevadensis</i>	Sierra Nevada Hosackia (R)
<i>Lotus nuttallianus</i> E. Greene	Nuttall's Lotus (R)
<i>Lotus oblongifolius</i> (Benth.) Greene var. <i>cupreus</i> (Greene) Ottley	Stream Trefoil (R)
<i>Lotus oblongifolius</i> (Benth.) Greene var. <i>oblongifolius</i>	Narrow-leaved Hosackia, Stream Trefoil (U)
<i>Lotus scoparius</i> var. <i>brevialatus</i> Ottley	Deerweed (R)
<i>Lotus stipularis</i> (Benth.) Greene var. <i>stipularis</i>	Balsam Lotus (R)
<i>Ludwigia palustris</i> (L.) Elliot	Streamside Water Primrose (R)
<i>Lupinus adsurgens</i> E. Drew var. <i>adsurgens</i>	Silky Lupine (R)
<i>Lupinus adsurgens</i> var. <i>undulatus</i> C.P. Smith	Wavyleaf Silky Lupine (R)
<i>Lupinus agardhianus</i> Heller	Lupine (R)
<i>Lupinus albicaulis</i> Hooker	Whitestem Lupine (R)
<u><i>Lupinus albifrons</i> var. <i>douglasii</i> (Agardh) C.P. Smith</u>	<u>Island Silver Bush Lupine</u> (R)
<i>Lupinus andersonii</i> S. Watson	Anderson Lupine (U)
<i>Lupinus arboreus</i> Sims	Yellow Bush Lupine (U)
<i>Lupinus benthamii</i> A. Heller var. <i>benthamii</i>	Spider Lupine (R)
<i>Lupinus breweri</i> Gray var. <i>breweri</i>	Brewer Mat Lupine (U)
<i>Lupinus breweri</i> var. <i>bryoides</i> C.P. Smith	Alpine Brewer Lupine (U)
<u><i>Lupinus chamissonis</i> Eschsch.</u>	<u>Coastal Bush Lupine</u> (R)
<i>Lupinus concinnus</i> spp. <i>optatus</i> D. Dunn	Bajada Lupine (R)
<i>Lupinus concinnus</i> spp. <i>orcutti</i> (S. Watson) D. Dunn	Orcutt Bajada Lupine (R)
<i>Lupinus excubitus</i> var. <i>austromontanus</i> (A.A. Heller) C.P. Smith	Southern Mountain Bush Lupine (U)
<i>Lupinus excubitus</i> var. <i>johnstonii</i> C.P. Smith	Johnston Bush Lupine (R)
<i>Lupinus formosus</i> var. <i>robustus</i> C.P. Smith	Summer Bush Lupine (R)
<i>Lupinus latifolius</i> J. Agardh var. <i>latifolius</i>	Broad-leaved Lupine (R)
<i>Lupinus latifolius</i> var. <i>parishii</i> C.P. Smith	Parish Broad-leaved Lupine (U)
<i>Lupinus lepidus</i> var. <i>confertus</i> (Kellogg) C.P. Smith	Prairie Lupine (U)
<i>Lupinus luteolus</i> Kellogg	Butter Lupine (U)
<i>Lupinus microcarpus</i> var. <i>densiflorus</i> (Benth) Jeps.	Densely Red-flowered Lupine (R)
<i>Lupinus microcarpus</i> var. <i>horizontalis</i> (A.A. Heller) Jeps.	Prostrate Red-flowered Lupine (U, Type)
<i>Lupinus nanus</i> Benth.	Small Lupine (U)
<i>Lupinus paynei</i> Davidson	Payne's Bush Lupine (R, Type)

Scientific Name	Common Name
<i>Lupinus polyphyllus</i> var. <i>burkei</i> (S. Watson) C. Hitchc.	Large-leaved Lupine (R)
<i>Lycium andersonii</i> Gray	Anderson Desert-thorn (R)
<i>Lycium californicum</i> Nuttall ex Gray	California Desert-thorn (R)
<i>Lycium verrucosum</i> Eastwood	San Nicolas Island Desert-thorn (R, Type)
<i>Lythrum californicum</i> T. & G.	California Loosestrife (U)
<i>Madia elegans</i> ssp. <i>densifolia</i> (E. Greene) Keck	Dense-flowered Tarplant or Madia (R)
<i>Madia elegans</i> ssp. <i>vernalis</i> Keck	Vernal Tarplant or Madia (R)
<i>Madia elegans</i> ssp. <i>wheeleri</i> (Gray) Keck	Wheeler Tarplant or Madia (R)
<i>Madia exigua</i> (Smith) A. Gray	Small or Threadstem Tarplant or Madia (R)
<i>Madia sativa</i> Molina	Coast Tarplant (R)
<i>Maianthemum racemosum</i> ssp. <i>amplexicaule</i> (Nutt.) LaFrankie	False Solomon's Seal, Wild Lily of the Valley (R)
<i>Maianthemum stellatum</i> (L.) Link	False Solomon's Seal, Wild Lily of the Valley (R)
<i>Malacothamnus fasciculatus</i> var. <i>laxiflorus</i> (Gray) Kearney	Lax-flowered Bushmallow (R)
<i>Malacothamnus fremontii</i> (Torrey ex Gray) Torrey ex. Greene	Fremont Bushmallow (U)
<i>Malacothamnus marruboides</i> (D. & H.) Greene	Pink-flowered Bush[Globe]mallow (U)
<i>Malacothamnus orbiculatus</i> (E. Greene) E. Greene	Roundleaf Bushmallow (U)
<i>Malacothamnus nuttallii</i> Abrams	Nuttall Bushmallow (Type)
<i>Malacothrix californica</i> DC. var. <i>californica</i>	California Cliff-aster (U)
<i>Malacothrix clevelandii</i> Gray	Cleveland Cliff-aster (R)
<i>Malacothrix coulteri</i> Gray	Snake-head (R)
<i>Malacothrix foliosa</i> Gray ssp. <i>foliosa</i>	Leafy Cliff-aster (R)
<i>Malacothrix foliosa</i> ssp. <i>crispifolia</i> W.S. Davis	Leafy Cliff-aster (R)
<i>Malacothrix foliosa</i> ssp. <i>polycephala</i> W.S. David	Many-headed Leafy Cliff-aster (R)
<i>Malacothrix glabrata</i> A. Gray	Desert Dandelion (R)
<i>Malacothrix incana</i> (Nuttall) Torrey & A. Gray var. <i>incana</i>	Dunedelion (U) CNPS List 4
<i>Malacothrix junakii</i> W.S. Davis	Junak Dandelion (R, Type)
<i>Malacothrix phaeocarpa</i> W.S. Davis	Brown-fruited Dandelion (R) CNPS List 4
<i>Malacothrix saxatilis</i> (Nuttall) T. & G. var. <i>saxatilis</i>	Cliff-aster (U)
<i>Malacothrix saxatilis</i> var. <i>altissima</i> (Greene) Ferris	Cliff-aster (R)
<i>Malacothrix saxatilis</i> var. <i>commutata</i> Ferris	Cliff-aster (U)
<i>Malacothrix saxatilis</i> var. <i>implicata</i> (Eastw.) Hall	Implicated Cliff-aster (U, Type)
<i>Malacothrix similis</i> Davis & Raven	Mexican Cliff-aster (R)
<i>Malacothrix squalida</i> Greene	Island Dandelion (R)
<i>Marah macrocarpus</i> var. <i>major</i> (Dunn) Stocking	Island Man-root (R)
<i>Marsilea vestita</i> Hooker & Greville ssp. <i>vestita</i>	Hairy Pepperwort, Clover Fern (R)
<i>Meconella denticulata</i> E. Greene	Tiny Poppy (R)
<i>Melica californica</i> Scribner var. <i>californica</i>	California Melic Grass (U)
<i>Melica frutescens</i> Scribner	Melic Grass (R)
<i>Melica stricta</i> Bolander var. <i>albicaulis</i>	Whitestem Rock Melic Grass (R)
<i>Mentha arvensis</i> L.	Field Mint (R)
<i>Mentzelia affinis</i> Greene	Stickleaf (R)
<i>Mentzelia albicaulis</i> (Hook.) T. & G.	Whitestem Stickleaf (R)
<i>Mentzelia congesta</i> (Nuttall) T. & G. var. <i>congesta</i>	Congested Stickleaf (U)
<i>Mentzelia congesta</i> var. <i> davidsoniana</i> (Abrams) J.F. Macbr.	Ventana Stickleaf (R)
<i>Mentzelia dispersa</i> S. Watson	Scattered Stickleaf (R)
<i>Mentzelia gracilentata</i> T. & G.	Slender Stickleaf (R)
<i>Mentzelia micrantha</i> (Hook. & Arnott) T. & G.	Tiny-flowered Stickleaf (U)
<i>Mentzelia pectinata</i> Kellogg	Stickleaf (R)
<i>Mentzelia veatchiana</i> Kellogg	Veatch Stickleaf (R)
<i>Micranthes californica</i> (Greene) Small	California Saxifrage (R)
<i>Micropus californicus</i> Fischer & C. Meyer var. <i>californicus</i>	Slender Cottonweed (U)
<i>Microseris douglasii</i> (DC.) Schultz-Bip. ssp. <i>douglasii</i>	Douglas Microseris (R)
<i>Microseris douglasii</i> ssp. <i>tenella</i> (A. Gray) Chambers	Slender Douglas Microseris (R)
<i>Microseris elegans</i> A. Gray	Elegant Microseris (R)
<i>Mimulus puniceus</i> Nuttall	Red Bush Monkeyflower (R)
<i>Mimulus androsaceus</i> Greene	Naked Sepal Monkeyflower (R)

<u>Scientific Name</u>	<u>Common Name</u>
<i>Mimulus aurantiacus</i> var. <i>parviflorus</i> (Greene) D.M. Thompson	Bush Monkeyflower (R)
<i>Mimulus bigelovii</i> (Gray) Gray var. <i>bigelovii</i>	Bigelow Monkeyflower (R)
<i>Mimulus bolanderi</i> Gray	Bolander Monkeyflower (R)
<i>Mimulus breweri</i> (E. Greene) Cov.	Brewer Monkeyflower (R)
<i>Mimulus congdonii</i> Robinson	Congdon Monkeyflower (R)
<i>Mimulus constrictus</i> (A.L. Grant) Pennell	Narrow-throated Monkeyflower (U)
<i>Mimulus flemingii</i> Munz	Island Bush Monkeyflower (R)
<i>Mimulus floribundus</i> Lindley	Floriferous Monkeyflower (U)
<i>Mimulus fremontii</i> (Benth.) Gray var. <i>fremontii</i>	Fremont Monkeyflower (U)
<i>Mimulus johnstonii</i> A.L. Grant	Johnston Monkeyflower (R)
<i>Mimulus longiflorus</i> var. <i>rutilus</i> A. Grant	Red Sticky Bush Monkeyflower (R)
<i>Mimulus moschatus</i> var. <i>longiflorus</i> A. Gray	Musk Monkeyflower (R)
<i>Mimulus parishii</i> E. Greene	Parish's Monkeyflower (R)
<i>Mimulus primuloides</i> Benth. var. <i>primuloides</i>	Primrose Monkeyflower (R)
<i>Mimulus rattanii</i> Gray	Rattan's Monkeyflower (R)
<i>Mimulus rubellus</i> Gray	Little Redstem Monkeyflower (R)
<i>Mimulus suksdorfii</i> Gray	Suksdorf Monkeyflower (R)
<i>Mimulus tilingii</i> Regel	Creeping Monkeyflower (R)
<i>Minuartia douglasii</i> (Fenzl ex T. & G.) Mattf.	Douglas Sandwort (R)
<i>Minuartia pusilla</i> (S. Watson) Mattf.	Sandwort (R)
<i>Mirabilis laevis</i> var. <i>villosa</i> (Kellogg) Spellenberg	Woolly Wishbone-bush (R)
<i>Mirabilis multiflora</i> var. <i>pubescens</i> S. Watson	Froebel Four O'Clock (R)
<i>Monanthochloe littoralis</i> Engelm.	Shoregrass (R)
<i>Monardella australis</i> Abrams	Southern Coyote Mint (R)
<i>Monardella hypoleuca</i> Gray ssp. <i>hypoleuca</i>	White-veined Coyote Mint (U)
<i>Monardella linioides</i> ssp. <i>oblonga</i> (Greene) Abrams	Flax-leaved Horsemint (R) CNPS List 1B
<i>Monardella sinuata</i> A.C. Sanders & M.A. Elvin ssp. <i>sinuata</i>	Sinuate Monardella (R)
<i>Monardella undulata</i> Benth.	Curly-leaved Horsemint (R)
<i>Monolepis nuttalliana</i> (Schultes) E. Greene	Nuttall Monolepis, Poverty Weed (R)
<i>Monolopia lanceolata</i> Nuttall	Lanceleaf Hilltop Daisy (R)
<i>Monolopia major</i> DC.	Cupped Daisy (R)
<i>Montia chamissoi</i> (Ledeb. Ex Spreng.) Greene	Toad-Lily (R)
<i>Mucronea californica</i> Benth. var. <i>californica</i>	California Spineflower (R)
<i>Mucronea perfoliata</i> (Gray) A.A. Heller var. <i>perfoliata</i>	Perfoliate Spineflower (R)
<i>Muhlenbergia andina</i> (Nuttall) A. Hitchc.	Foxtail Muhly (R)
<i>Muhlenbergia asperifolia</i> (Nees & Meyen) Parodi	Scratchgrass (U)
<i>Muhlenbergia richardsonis</i> (Trin.) Rydberg	Mat Muhly (R)
<i>Muhlenbergia utilis</i> (Torrey) A. Hitchc.	Aparejo Grass (R)
<i>Muilla maritima</i> (Torrey) S. Watson	Common Muilla (U)
<i>Myosurus apetalus</i> Gay	Petaless Mousetails (R)
<i>Myosurus minimus</i> L.	Common Mousetails (R)
<i>Myrica californica</i> Chamisso	California Wax-Myrtle, Pacific Bayberry (R)
<i>Myriophyllum hippuroides</i> Torrey & A. Gray	Western Milfoil (R)
<i>Najas guadalupensis</i> (Sprengel) Magnus	Common Water-nymph, Southern Naiad (R)
<i>Navarretia atractyloides</i> (Benth.) Hook. & Arn.	Hollyleaf Skunkweed (U)
<i>Navarretia hamata</i> E. Greene ssp. <i>hamata</i>	Navarretia (R)
<i>Navarretia mellita</i> E. Greene	Sticky Navarretia (R)
<i>Navarretia ojaiensis</i> Elvin, J.M. Porter & L.A. Johnson	Ojai Navarretia (U) CNPS List 1B.1
<i>Navarretia peninsularis</i> Greene	Southern California Navarretia (R)
<i>Navarretia squarrosa</i> (Eschsch.) Hook. & Arn.	Downy Navarretia (R)
<i>Nemacladus californicus</i> (A. Gray) Morin	Parishella (R)
<i>Nemacladus capillaris</i> Greene	Common Nemacladus (R)
<i>Nemacladus gracilis</i> Eastw.	Slender Nemacladus (R)
<i>Nemacladus orientalis</i> (McVaugh) Morin	Western Sticky Nemacladus (R)
<i>Nemacladus ramosissimus</i> Nuttall	Nuttall's Nemacladus (R)
<i>Nemacladus secundiflorus</i> var. <i>robbinsii</i> Morin	Robbins' Nemacladus (R)

<u>Scientific Name</u>	<u>Common Name</u>
<i>Nemacladus sigmoideus</i> G.T. Robbins	Thread Stem (R)
<i>Nemophila menziesii</i> var. <i>integrifolia</i> Parish	Baby Blue-eyes (R)
<i>Nemophila parviflora</i> Douglas ex Bentham var. <i>parviflora</i>	Smallflower Nemophila (R)
<i>Nemophila pulchella</i> var. <i>fremontii</i> (A.D.E. Elmer) Constance	Fremont Baby Blue-eyes (R)
<i>Nicotiana attenuata</i> Torrey	Coyote Tobacco (U)
<u><i>Nicotiana clevelandii</i> A. Gray</u>	<u>Cleveland Indian Tobacco (R)</u>
<i>Nicotiana quadrivalis</i> Pursh var. <i>quadrivalis</i>	Indian Tobacco (R)
<i>Nicotiana quadrivalis</i> Pursh var. <i>wallacei</i> (Gray) Mansf.	Wallace's Indian Tobacco (R)
<i>Nolina cismontana</i> Dice	Chaparral Bear-grass (R) CNPS List 1B
<i>Notholeana californica</i> D.C. Eaton	California Cloak Fern (R)
<i>Oenothera deltoides</i> ssp. <i>cognata</i> (Jepson) Klein	Birdcage Evening-primrose, Devil's Lantern (R)
<i>Oenothera elata</i> ssp. <i>hookeri</i> (Torrey & A. Gray) W. Dietr.	Hooker Coast Evening Primrose (R)
<i>Oenothera longissima</i> ssp. <i>clutei</i> (Nelson) Munz	Evening Primrose (R)
<i>Oligomeris linifolia</i> (M. Vahl) J.F. Macbr.	Narrowleaf Oligomeris (U)
<i>Opuntia basilaris</i> Engelm. & J. Bigelow var. <i>basilaris</i>	Beavertail Cactus (R)
<u><i>Opuntia littoralis</i> (Engelm.) Cockerell X <i>O. oricola</i> Philbr.</u>	<u>Coastal-Round-pad Prickly Pear Hybrid (R)</u>
<i>Opuntia Xoccidentalis</i> Engelm. & Bigelow	Western Pricklypear Cactus (R)
<i>Opuntia oricola</i> Philbr.	Round-pad Prickly Pear (U)
<i>Opuntia parryi</i> Engelm.	Cane or Snake Cholla (R)
<i>Opuntia prolifera</i> Engelm.	Coastal Cholla (R)
<i>Opuntia Xvaseyi</i> (J. Coulter) Britton & Rose (<i>O. littoralis</i> X <i>phaeacantha</i>)	Mesa Prickly Pear (R)
<i>Orcuttia californica</i> Vasey	California Orcutt Grass (R)
<i>Orobanche californica</i> ssp. <i>feudgei</i> (Munz) Heckard	California Sagebrush Broom-rape (R)
<i>Orobanche californica</i> ssp. <i>jepsonii</i> (Munz) Heckard	Jepson Sagebrush Broom-rape (R)
<i>Orobanche parishii</i> ssp. <i>brachyloba</i> Heckard	Short-lobed Broom-rape (R)
<i>Orobanche parishii</i> (Jeps.) Heckard ssp. <i>parishii</i>	Parish Broom-rape (U)
<i>Orobanche uniflora</i> L.	Naked Broomrape (R)
<i>Orobanche valida</i> Jeps. ssp. <i>valida</i>	Rock Creek Broom-rape (R)
<i>Orobanche vallicola</i> (Jepson) Heckard	Hillside Broomrape (R)
<i>Osmorhiza chilensis</i> H. & A.	Mountain Sweetroot (R)
<i>Oxalis albicans</i> ssp. <i>californica</i> (Abrams) G. Eiten	California White Wood Sorrel (R)
<i>Oxalis albicans</i> ssp. <i>pilosa</i> (Nuttall) G. Eiten	Hairy White Wood Sorrel (U)
<i>Oxytheca caryphylloides</i> Parry	Chickweed Oxytheca (R) CNPS List 4
<i>Oxytheca parishii</i> var. <i>abramsii</i> (McGregor) Munz	Abrams Oxytheca (R, Type) CNPS List 1B
<i>Oxytheca perfoliata</i> T. & G.	Perfoliate Oxytheca (R)
<i>Oxytheca trilobata</i> A. Gray	Three-lobed Spineflower (R)
<i>Packera breweri</i> (Burt Davy) W.A. Weber & Löve	Brewer Butterweed or Groundsel (U)
<i>Panicum capillare</i> ssp. <i>hillmanii</i> (Chase) Freckmann & Lelong	Hillman Witchgrass (U)
<i>Papaver californicum</i> Gray	Wind or Fire Poppy (R)
<i>Parietaria hespera</i> var. <i>californica</i> B.D. Hinton	California Pellitory (U)
<i>Parietaria pensylvanica</i> Muhlenberg ex Willdenow	Pennsylvania Pellitory (R)
<i>Parthenocissus vitaea</i> (Knerr) Hitchc.	Woodbine (R)
<i>Paspalum distichum</i> L.	Joint Dallis Grass or Knotgrass (R)
<i>Pectocarya heterocarpa</i> I.M. Johnston	Two-faced Pectocarya (R)
<i>Pedicularis densiflora</i> Hook.	Indian Warrior (R)
<i>Pedicularis semibarbata</i> Gray	Pine-woods Lousewort (U)
<i>Pediomelum castoreum</i> (S. Watson) Rydb.	Desert Indian Breadroot (R)
<i>Pellaea mucronata</i> var. <i>californica</i> (Lemmon) Munz & I.M. Johnston	California Birdsfoot Cliffbrake or Fern (R)
<i>Penstemon grinnellii</i> Eastwood var. <i>grinnellii</i>	Grinnell Beardtongue (U)
<i>Penstemon heterophyllus</i> var. <i>australis</i> Munz & I.M. Johnston	Southern Mountain Penstemon (R)
<i>Penstemon laetus</i> Gray var. <i>laetus</i>	Gay Penstemon (U)
<i>Pentachaeta fragilis</i> Brandege	Fragile Pentachaeta (R)
<i>Pentachaeta lyonii</i> Gray	Lyon's Pentachaeta (R) Listed Endangered
<i>Pentagramma triangularis</i> ssp. <i>semipallida</i> (J.T. Howell) Yatsk., Windham, & E. Wollenw.	Silverback Fern (R)
<i>Pentagramma triangularis</i> ssp. <i>viscosa</i> (D.C. Eaton) Yatsk., Windham, & E. Wollenw.	San Nicolas Island Fern (R)
<i>Perideridia gairdneri</i> (Hook. & Arn.) Mathias ssp. <i>gairdneri</i>	Gairdner Yampah (R)

Scientific Name

Common Name

<i>Perideridia parishii</i> ssp. <i>latifolia</i> (Gray) Chuang & Constance	Parish Yampah (R)
<i>Perideridia pringlei</i> (J.M. Coulter & Rose) A. Nelson & J.F. Macbr.	Adobe or Pringle Yampah (U) CNPS List 4
<i>Perityle emoryi</i> Torrey	Rock Daisy (U)
<i>Phacelia affinis</i> Gray var. <i>affinis</i>	Phacelia (R)
<i>Phacelia austromontana</i> J.T. Howell	Low Phacelia (R)
<i>Phacelia bicolor</i> Torrey ex S. Watson	Bicolored Phacelia (R)
<i>Phacelia cicutaria</i> E. Greene var. <i>cicutaria</i>	Caterpillar Phacelia (U)
<i>Phacelia cicutaria</i> var. <i>hubbyi</i> (J.F. Macbr.) J.T. Howell	Hubby Caterpillar Phacelia (U)
<i>Phacelia ciliata</i> Benth. var. <i>ciliata</i>	Ciliate Phacelia (U)
<i>Phacelia crenulata</i> var. <i>minutiflora</i> (J.W. Voss ex Munz) Jepson	Small-flowered Crenulate Phacelia (R)
<i>Phacelia cryptantha</i> E. Greene	Forget-Me-Not Phacelia (R)
<i>Phacelia exilis</i> (Gray) G.J. Lee	Transverse Range Phacelia (R) CNPS 4.3
<i>Phacelia grisea</i> Gray	White-flowered Phacelia (R)
<i>Phacelia humilis</i> var. <i>dudleyi</i> J. Howell	Dudley Phacelia (R)
<i>Phacelia imbricata</i> ssp. <i>patula</i> (Brand) Heckard	Mountain Phacelia (R)
<i>Phacelia minor</i> (Harvey) Thellung	Wild Canterbury Bell (R)
<i>Phacelia mohavensis</i> A. Gray	Mojave Phacelia (R) CNPS 4.3
<i>Phacelia mutabilis</i> Greene	Changeable Phacelia (R)
<i>Phacelia oreopola</i> Heckard ssp. <i>oreopela</i>	Mountain Phacelia (R)
<i>Phacelia ramosissima</i> var. <i>austrolittoralis</i> Munz	South Coast Branching Phacelia (R) CNPS 4.3
<i>Phacelia ramosissima</i> var. <i>latifolia</i> (Torrey) Cronq.	Branching Phacelia (U)
<i>Phacelia rattanii</i> A. Gray	Brand Phacelia (R)
<i>Phacelia viscida</i> var. <i>albiflora</i> (Nuttall) A. Gray	White-flowered Viscid Phacelia (R)
<i>Phalaris lemmonii</i> Vasey	Lemmon Canarygrass (R)
<i>Phlox austromontana</i> Coville	Spreading Phlox (R)
<i>Phlox caespitosa</i> Nuttall	Rigid Mat Phlox (R)
<i>Phlox diffusa</i> Benth.	Mat Phlox (R)
<i>Phlox hoodii</i> ssp. <i>canescens</i> (T. & G.) Wherry	Fuzzy Hood Phlox (R)
<i>Pholistoma membranaceum</i> (Benth.) Constance	White Fiesta Flower (R)
<i>Pholistoma racemosum</i> (Nutt. ex A. Gray) Constance	South Coast Fiesta Flower (R)
<i>Phoradendron pauciflorum</i> Torrey	Few-flowered Mistletoe (R)
<i>Phragmites australis</i> (Cav.) Steudel	Common Reed (R)
<i>Phyla nodiflora</i> (L.) E. Greene var. <i>nodiflora</i>	Common Frog-fruit (R)
<i>Phyllospadix scouleri</i> Hook.	Scouler Surf-grass (R)
<i>Phyllospadix torreyi</i> S. Watson	Torrey Surf-grass (R)
<i>Pickeringia montana</i> Nutt. var. <i>montana</i>	Chaparral Pea (R)
<i>Pilularia americana</i> A. Braun	American Pillwort (R)
<i>Pinus contorta</i> ssp. <i>murrayana</i> (Grev. & Balf.) Critchf.	Lodgepole Pine (R)
<i>Pinus coulteri</i> D. Don	Coulter Pine (R)
<i>Pinus flexilis</i> E. James	Limber Pine (R)
<i>Pinus sabiniana</i> Douglas	Foothill or Gray Pine (R)
<i>Piperia elongata</i> Rydb.	Dense-flowered Rein Orchid (R)
<i>Piperia michaelii</i> (Greene) Rydb.	Michael Piperia (R) CNPS 4.2
<i>Piperia unalascensis</i> (Spreng.) Rydb	Slender-spire Orchid (R)
<i>Plagiobothrys acanthocarpus</i> (Piper) I.M. Johnston	Adobe Popcornflower (R)
<i>Plagiobothrys arizonicus</i> (Gray) Gray	Arizona Popcornflower (R)
<i>Plagiobothrys canescens</i> Benth.	Valley or Bracted Popcornflower (R)
<i>Plagiobothrys collinus</i> var. <i>fulvescens</i> (I.M. Johnston) Higgins	Popcornflower (R)
<i>Plagiobothrys collinus</i> var. <i>gracilis</i> (A. Gray) Higgins	Slender California Popcornflower (R)
<i>Plagiobothrys hispidulus</i> (E. Greene) I.M. Johnston	Hispid Popcornflower (R)
<i>Plagiobothrys leptocladus</i> (E. Greene) I.M. Johnston	Alkali Popcornflower (R)
<i>Plagiobothrys tenellus</i> (Nuttall) A. Gray	Slender Popcornflower (R)
<i>Plagiobothrys undulatus</i> (Piper) I.M. Johnston	Undulate Popcornflower (R)
<i>Plantago elongata</i> Pursh	Coastal Plantain (R)
<i>Plantago patagonica</i> Jacq.	Patagonia Plantain (R)
<i>Plantago pusilla</i> Nuttall	Plantain (R)

Scientific Name

Common Name

<i>Platanthera leucostachys</i> Lindley	White-flowered Bog-Orchid (R)
<i>Platanthera sparsiflora</i> (S. Watson) Schltr.	Few-flowered Rein Orchid (R)
<i>Plectritis ciliosa</i> ssp. <i>insignis</i> (Suksd.) D. Morey	Petite Long-spurred Plectritis (R)
<i>Plectritis macrocera</i> Torrey & A. Gray	White Plectritis (R)
<i>Pluchea odorata</i> (L.) Cass.	Saltmarsh Fleabane (U)
<i>Pluchea sericea</i> (Nutt.) Coville	Arrow Weed (R)
<i>Poa secunda</i> ssp. <i>juncifolia</i> (Scribner) R. Soreng	Rush Bluegrass (R)
<i>Polemonium micranthum</i> Benth.	Phlox (U)
<i>Polycarpon depressum</i> Nutt.	California Allseed (R)
<i>Polygala cornuta</i> var. <i>fishiae</i> (C. Parry) Jeps.	Fish Milkwort (U) CNPS List 4
<i>Polygonum amphibium</i> var. <i>emersum</i> Michx.	Kelp, Water-Smartweed (R)
<i>Polygonum douglasii</i> ssp. <i>johnstonii</i> (Munz) J. Hickman	Sawatch Knotweed (R)
<i>Polygonum hydropiperoides</i> Michaux	Mild Water Pepper, Water Smartweed (R)
<i>Polygonum lapathifolium</i> L.	Willow Weed (U)
<i>Polygonum polygaloides</i> ssp. <i>kelloggii</i> (Greene) J. Hickman	Kellogg Knotweed (R)
<i>Polygonum punctatum</i> Elliott	Dotted Smartweed (U)
<i>Polygonum sawatchense</i> Small ssp. <i>sawatchense</i>	Sawatch Smartweed (R)
<i>Polypodium hesperium</i> Maxon	Western Polypody (R)
<i>Polystichum imbricans</i> (D.C. Eaton) D.H. Wagner ssp. <i>imbricans</i>	Imbricate Sword Fern (R)
<i>Polystichum imbricans</i> ssp. <i>curtum</i> (Ewan) D.H. Wagner	Imbricate Sword Fern (R)
<i>Polystichum munitum</i> (Kaulf.) C. Presl	Western Sword Fern (R)
<i>Populus balsamifera</i> ssp. <i>trichocarpa</i> (T. & G.) Brayshaw	Black Cottonwood (Type)
<i>Populus fremontii</i> Wats. XP. <i>balsamifera</i> ssp. <i>trichocarpa</i> (T. & G.) Brayshaw	Hybrid Fremont Cottonwood (R)
<i>Potamogeton foliosus</i> Raf. var. <i>foliosus</i>	Leafy Pondweed (R)
<i>Potamogeton nodosus</i> Poirlet	Long-leaved Pondweed (R)
<i>Potamogeton pectinatus</i> L.	Fennel-leaf Pondweed (R)
<i>Potentilla anserina</i> ssp. <i>pacifica</i> (Howell) Rousi	Pacific Coast Cinquifol or Silverweed (R)
<i>Potentilla biennis</i> Greene	Biennial Cinquifol (R)
<i>Potentilla glandulosa</i> ssp. <i>nevadensis</i> (S. Watson) Keck	Sierra Nevada Sticky Cinquifol (R)
<i>Potentilla glandulosa</i> ssp. <i>reflexa</i> (Greene) Keck	Greene Cinquifol (R)
<i>Potentilla gracilis</i> var. <i>elmeri</i> (Rydb.) Jeps.	Elmer Slender Cinquifol (R, Type)
<i>Prunus emarginata</i> (Hooker) Walp.	Bitter Cherry (R)
<i>Prunus ilicifolia</i> ssp. <i>lyonii</i> (Eastw.) P. Raven	Catalina Cherry (R)
<i>Pseudognaphalium beneolens</i> (A. Gray) Anderberg	Coastal Everlasting (U)
<i>Pseudognaphalium leucocephalum</i> (A. Davidson) Anderberg	Whiteleaf or Sonora Everlasting (R) CNPS 2.2
<i>Pseudognaphalium ramosissimum</i> (Nutt.) Anderberg	Pink Everlasting (U)
<i>Pseudostellaria jamesiana</i> (Torrey) W.A. Weber & R.I. Hartman	False Chickweed (R)
<i>Psilocarphus brevissimus</i> Nutt. var. <i>brevissimus</i>	Woolly Marbles (R)
<i>Psilocarphus chilensis</i> A. Gray	Round Woolly Marbles (R)
<i>Pterospora andromedea</i> Nutt.	Woodland Pinedrops (R)
<i>Purshia tridentata</i> var. <i>glandulosa</i> (Curran) M.E. Jones	Antelope Bush (U)
<i>Pyrola asarifolai</i> Michx. ssp. <i>asarifolia</i>	Bog Wintergreen (R)
<i>Pyrola picta</i> Smith	White-veined Wintergreen (R)
<i>Pyrrocoma racemosa</i> var. <i>paniculata</i> (Nutt.) J. Kartesz & K. Gandhi	Pyrrocoma (R)
<i>Quercus douglasii</i> H. & A.	Blue Oak (R)
<i>Quercus dumosa</i> Nutt.	Nuttall or Coastal Sage Scrub Oak (R) CNPS 1B
<i>Quercus Xmoreha</i> Kellogg	Oracle Oak (R)
<i>Quercus palmeri</i> Engelm.	Palmer Oak (R)
<i>Quercus tomentella</i> Engelm.	Channel Island Oak (R)
<i>Quercus turbinella</i> Greene ssp. <i>turbinella</i>	Sonoran Scrub Oak (R)
<i>Quercus wislizenii</i> ssp. <i>frutescens</i> (Engelm.) E. Murray	Shrubby Interior Live Oak (U)
<i>Quercus Xalvordiana</i> Eastwood (<i>Q. douglasii</i> X <i>Q. john-tuckeri</i>)	Alvord Oak (R)
<i>Quercus Xmacdonaldii</i> Greene	MacDonald Oak (R)
<i>Ranunculus californicus</i> Bentham var. <i>californicus</i>	California Buttercup (U)
<i>Ranunculus hebecarpus</i> Hooker & Arnott	Hebe-fruited Buttercup (R)
<i>Rhamnus tomentella</i> ssp. <i>cuspidata</i> (Greene) Sawyer	Cuspid Hoary Coffeeberry (R)

Scientific Name

Rhus integrifolia (Nutt.) Brewer & S. Watson XR. *ovata* S. Watson
Rhus trilobata var. *malacophylla* (E. Greene) Jepson
Ribes amarum McClatchie var. *amarum*
Ribes amarum var. *hoffmannii* Munz
Ribes aureum var. *gracillimum* (Cov. & Britton) Jeps.
Ribes californicum Hooker & Arnott var. *californicum*
Ribes cereum Douglas var. *cereum*
Ribes indecorum Eastw.
Ribes montigenum McClatchie
Ribes nevadense Kellogg
Ribes quercetorum Greene
Ribes roezlii Regel var. *roezlii*
Ribes velutinum Greene
Rigiopappus leptocladus Gray
Romneya coulteri Harvey
Rorippa curvisiliqua (Hooker) Bessey ex Britton
Rorippa palustris var. *occidentalis* (S. Watson) Rollins
Rosa woodsii var. *ultramontana* (S. Watson) Jeps.
Rubus leucodermis var. *bernardinus* (E. Greene) Jepson
Rumex fueginus Phil. var. *ovato-cordatus* Rech.f
Rumex hymenosepalus Torrey
Rumex maritimus L.
Rumex salicifolius var. *crassus* (Rech. f.) J. Howell
Rupertia physodes (Hook.) Grimes
Ruppia cirrhosa (Petagna) Grande
Ruppia maritima L.
Sagina decumbens ssp. *occidentalis* (S. Wats.) G. Crow
Sagina saginoides (L.) H. Karst.
Sagittaria sanfordii Greene
Salicornia bigelovii Torrey
Salicornia depressa Standley
Salix gooddingii C. Ball
Salix lasiolepis var. *bigelovii* (Torrey) Bebb.
Salix melanopsis Nuttall
Saltugilia australis (H. Mason & A.E. Grant) L.A. Johnson
Salvia Xbernardina Parish ex Greene
Salvia carduacea Benth.
Salvia dorrii var. *pilosa* (Gray) Strachan & Reveal
Samolus parviflorus Raf.
Sanicula bipinnata Hooker & Arnott
Sanicula bipinnatifida Hooker
Sanicula graveolens Peopp. ex DC.
Sanicula tuberosa Torrey
Sarcocornia pacifica (Standley) A.J. Scott [*Salicornia virginica* L.]
Sarcodes sanguinea Torrey
Satureja douglasii (Benth.) Briq.
Satureja mimuloides (Bentham) Briq.
Saussurea americana D. Eaton
Schoenoplectus acutus var. *occidentalis* (S. Watson) S.G. Smith
Schoenoplectus californicus (C. Meyer) Soják, Čas. Nár.
Schoenoplectus pungens var. *badius* (J. Presl & C. Presl) S.G. Smith
Schoenoplectus pungens var. *longispicatus* (Britton) S.G. Smith
Schoenoplectus saximontanus (Fern.) J. Raynal
Schoenoplectus tabernaemontani (C. Gmelin) Palla
Scirpus microcarpus J. Presl & C. Presl
Scrophularia californica ssp. *floribunda* (E. Greene) Shaw

Common Name

Lemonade Berry-Sugar Bush Hybrid (R)
Woolly Skunkbrush (U)
Bitter Gooseberry (R)
Hoffmann's Bitter Gooseberry (R, CNPS 3)
Slender Golden Currant (R)
Hillside Gooseberry (U)
Wax Currant (U)
White-flowered Currant (R)
Mountain Gooseberry (R)
Mountain Pink Currant (R)
Oak Gooseberry (U)
Sierra Gooseberry (U)
Plateau Gooseberry (R)
Rigiopappus (U)
Coulter Matilija Poppy (R) CNPS List 4
Curved-pod Water- cress (R)
Western Riparian Yellow-cress (R)
Interior Wild Rose (R)
Whitebark Raspberry (R)
Oxnard Dock (R, Type)
Wild Rhubarb, Canaigre (R)
Golden Dock (R)
Willow Dock (R)
Scurf-pea (R)
Spiral Wigeon-grass or Ditch-grass (R)
Wigeon-grass, Ditch-grass (R)
Western Pearlwort (R)
Sagina, Arctic Pearlwort (R)
Sanford Arrow-head (R) CNPS List 1B
Bigelow Pickleweed (R)
Pickleweed (R)
Goodding Black Willow (R)
Bigelow Arroyo Willow (R)
Dusky Willow (R)
Southern Gilia (R)
Bernard's Sage (R)
Thistle Sage (R)
Pilose Desert Sage (R)
Water-pimpernel (R)
Poison Sanicle (U)
Purple Sanicle (R)
Sanicle (R)
Tuberosa Sanicle (R)
Pacific Pickleweed or Swampfire (R)
Snow Plant (U)
Yerba Buena (R)
Monkeyflower Yerba Buena (R)
American Sawwort (R)
Viscid Tule (R)
California Bulrush (R)
Common Threesquare (U)
Common Threesquare (U)
Rocky Mountain Bulrush (R)
Soft-stem Bulrush (R)
Small-fruited Bulrush (U)
Many-flowered Figwort (R)

Scientific Name

Scutellaria siphocampyloides Vatke
Scutellaria tuberosa Benth.
Senecio aphanactis Greene
Senecio flaccidus var. *monoensis* (Greene) B.L. Turner & T.M. Barkley
Setaria gracilis Kunth
Setaria parviflora (Poir.) Kerguelen
Shepherdia argentea Nutt.
Sidalcea malviflora ssp. *dolosa* C.L. Hitchc.
Sidalcea neomexicana Gray
Sidalcea pedata Gray
Silene antirrhina L.
Silene bernardina S. Watson
Silene californica Durand
Silene lemmonii S. Watson
Solanum parishii A.A. Heller
Solanum umbelliferum Eschsch.
Solidago guiradonis Gray
Solidago velutina ssp. *sparsiflora* (A. Gray) Semple
Spergularia macrotheca var. *leucantha* (E. Greene) Robinson
Sphaeralcea ambigua A. Gray var. *ambigua*
Sphenosciadium capitellatum Gray
Sporobolus airoides (Torrey) Torrey
Stachys ajugoides var. *rigida* Jeps. & Hoover
Stebbinsoseris heterocarpa (Nuttall) Chambers
Stellaria nitens Nuttall
Stephanomeria exigua Nuttall ssp. *exigua*
Stephanomeria exigua ssp. *carotifera* (Hoover) Gottlieb
Stephanomeria exigua ssp. *coronaria* (Greene) Gottlieb
Stephanomeria pauciflora (Nutt.) Nelson var. *pauciflora*
Stephanomeria virgata ssp. *pleurocarpa* (Greene) Gottlieb
Stillingia linearifolia S. Watson
Stillingia spinulosa Torrey
Streptanthus campestris S. Watson
Stylocline gnaphaloides Nuttall
Stylomecon heterophylla (Benth.) G. Taylor
Suaeda calceoliformis (Hook.) Moq.
Suaeda esteroa Ferren & Whitmore
Suaeda moquinii (Torrey) Greene
Suaeda taxifolia (Standl.) Standl.
Swertia neglecta (H.M. Hall) Jeps.
Symphoricarpos albus var. *laevigatus* (Fern.) S.F. Blake
Syntrichopappus lemmonii (A. Gray) A. Gray
Tauschia hartwegii (A. Gray) J.F. Macbr.
Tetradymia canescens DC.
Tetradymia comosa Gray
Thalictrum fendleri Engelman ex Gray
Thalictrum polycarpum (Torrey) S. Watson
Thermopsis californica var. *argentina* (Greene) Chen & Turner
Thermopsis macrophylla var. *venosa* (Eastwood) Isely
Thysanocarpus conchuliferus E. Greene
Trichostema austromontanum Harlan Lewis ssp. *austromontanum*
Trichostema micranthum Gray
Trichostema ovatum Curran
Trifolium bifidum var. *decipiens* E. Greene
Trifolium ciliolatum Benth.
Trifolium cyathiferum Lindley

Common Name

Skullcap (U)
Danny Skullcap (U)
Rayless Ragwort (R)
Mono Butterweed (R)
Knotroot Bristlegrass (R)
Knotroot Bristlegrass (R)
Buffalo Berry, Silver Buffaloberry (U)
Dwarf Globemallow or Checkerbloom (R)
Salt Spring Checkermallow (R) CNPS List 2
Bird-footed Checkerbloom (R)
Snapdragon Campion, Catchfly (U)
Palmer Campion (R)
California Indian Pink (R)
Lemmon Campion or Catchfly (R)
Parish Nightshade (R)
Blue Witch (U)
Guirado Goldenrod (R)
Few-leaved Goldenrod (R)
White Large[-flowered] Sandspurrey (R)
Apricot Mallow (R)
Ranger Buttons, Swamp White Heads (R)
Alkali Sacaton (R)
Rigid Hedge Nettle (R)
Chicory Microseris (U)
Shining Chickweed (U)
Small Stephanomeria (R)
Carot Stephanomeria (U)
Small Stephanomeria (U)
Wire-lettuce (U)
Two-fruited Wreath Plant (R)
Narrowleaf Stillingia (R-extirpated?)
Annual Toothleaf (R-extirpated?)
Southern Jewelflower (R)
Everlasting Nest Straw (U)
Wind Poppy (R)
Seablite (R)
Estuary Seablite (R) CNPS List 1B
Bush Seepweed (R)
Woolly Seablite (R) CNPS List 4
Pine Green Gentian (U) CNPS List 4
Snowberry (R)
Lemmon's Xerasid (R) CNPS List 4
Hartweg Tauschia (U)
Cottonthorn, Horsebush (R)
Cottonthorn, Horsebush (R)
Fendler Meadow-rue (R)
Tall Western Meadow-rue (R)
Silvery False-Lupine (U) CNPS List 4
Slender Santa Ynez False-Lupine (R)
Santa Cruz Island Fringepod (R)
San Jacinto Bluecurls (R)
Bluecurls (R)
Ovate Bluecurls (R)
Pinole Clover (R)
Ciliate or Tree Clover (U)
Ciliate or Tree Clover (R)

Scientific Name

Common Name

<i>Trifolium depauperatum</i> var. <i>amplectens</i> (T. & G.) L.F. McDermott	Dwarf Sack Clover (R)
<i>Trifolium depauperatum</i> var. <i>truncatum</i> (Greene) Islay	Truncate Dwarf Sack Clover (U)
<i>Trifolium dictotomum</i> H. & A.	Island Rancheria Clover (R)
<i>Trifolium fucatum</i> Lindley	Bull Clover (U)
<i>Trifolium longipes</i> ssp. <i>atrorubens</i> (Greene) J.M. Gillett	Purple Clover (R)
<u><i>Trifolium microdon</i> Hook. & Arn.</u>	<u>Tiny-head Clover (R)</u>
<i>Trifolium monanthum</i> Gray var. <i>monanthum</i>	Carpet Clover (R)
<i>Trifolium monanthum</i> var. <i>grantianum</i> (A.A. Heller) Parish	Carpet Clover (R)
<i>Trifolium obtusiflorum</i> Hooker & Arnott	Creek Clover (U)
<i>Trifolium palmeri</i> S. Watson	Palmer Pinpoint Clover (R)
<i>Trifolium variegatum</i> Nutt. var. <i>variegatum</i>	Whitetip Clover (R)
<i>Trifolium wormskioldii</i> Lehm.	Cows Clover (R)
<i>Triglochin concinna</i> Davy var. <i>concinna</i>	Utah Arrow-grass (R)
<i>Triglochin maritima</i> L.	Seaside Arrow-grass (R)
<i>Triglochin striata</i> R. & P.	Three-ribbed Arrow-grass (R)
<i>Triteleia ixioides</i> (Aif. F.) Greene ssp. <i>ixioides</i>	Golden Brodiaea (R)
<i>Tropidocarpum gracile</i> Hook. [var. <i>dubium</i>]	Slender Tropidocarpum (R)
<i>Typha angustifolia</i> L.	Slender Cattail (R)
<i>Typha latifolia</i> L.	Broad-leaved Cattail, Soft Flag (U)
<i>Typha Xdomingensis</i> Pers.	Southern Cattail Hybrid (R)
<i>Veratrum californicum</i> Durand var. <i>californicum</i>	California False Hellebore (R)
<i>Verbena bracteata</i> Lagasca & J.D. Rodriguez	Prostrate Verbena (R)
<i>Verbena lasiostachys</i> var. <i>scabrida</i> Mold.	Western Verbena (R)
<i>Veronica peregrina</i> ssp. <i>xalapensis</i> (Kunth) Pennell	Purslane Speedwell (U)
<i>Veronica serpyllifolia</i> ssp. <i>humifusa</i> (Dickson) Syme	Tyme-leaved Speedwell (R)
<i>Vicia americana</i> Willd. var. <i>americana</i>	American Vetch (U)
<i>Vicia hassei</i> S. Watson	Hasse Vetch (R)
<i>Vicia ludoviciana</i> Nutt. var. <i>ludoviciana</i>	Vetch (R)
<i>Viguiera laciniata</i> Gray	San Diego County Viguiera (R)
<i>Viola aurea</i> Kellogg	Golden Violet (R)
<i>Viola macloskeyi</i> F.E. Lloyd ssp. <i>macloskeyi</i>	Small White Violet (R)
<i>Viola pedunculata</i> ssp. <i>tenuifolia</i> M.S. Baker & J.C. Clausen	Johnny-Jump-Up (U)
<i>Viola pinetorum</i> Greene ssp. <i>pinetorum</i>	Mountain Violet (U)
<i>Viola pinetorum</i> ssp. <i>grisea</i> (Jeps.) R.J. Little	Gray-leaved Violet (R) CNPS 1B
<i>Viola purpurea</i> ssp. <i>mohavensis</i> (M. Baker & J. Clausen) J. Clausen	Mojave Yellow Violet (U)
<i>Viola purpurea</i> Kellogg ssp. <i>purpurea</i>	Purple or Mountain Violet (U)
<i>Viola purpurea</i> ssp. <i>quercetorum</i> (M. Baker & J. Clausen) R.J. Little	Oak Violet (U)
<i>Vitis californica</i> Benth.	California Wild Grape (R)
<i>Vitis girdiana</i> Munson	Desert Wild Grape (R)
<i>Vulpia microstachys</i> var. <i>confusa</i> (Piper) Lonard & Gould	Ciliate Fescue (R)
<i>Yabea microcarpa</i> (Hooker & Arnott) Koso-Pol.	Yabea (R)
<i>Zannichellia palustris</i> L.	Horned-Pondweed (R)
<u><i>Zostera marina</i> L.</u>	<u>Eel-grass (R)</u>

Plants Expected to Occur in Ventura County But Lacking Physical Evidence¹¹

Scientific Name

Abronia latifolia Eschsch.
Achnatherum latiglumis (Swallen) Barkworth
Actaea rubra (Aiton) Wildenow
Adiantum aleuticum (Rupr.) C.A. Paris
Agastache urticifolia (Benham) Kuntze var. *urticifolia*
Agrostis microphylla Steudel
Agrostis scabra Willd.
Allenrolfea occidentalis (S. Watson) Kuntze
Alopecurus aequalis Sobol. var. *aequalis*
Alopecurus geniculatus L.
Ambrosia dumosa (A. Gray) Payne
Amsinckia eastwoodae J.F. Macbr.
Anaphalis margaritacea (L.) Benth. & Hooker F. ex C.B. Clarke
Arabis platysperma Gray var. *platysperma*
Aristida purpurea var. *nealleyi* (Vasey) K.W. Allred
Aristida purpurea var. *wrightii* (A. Hitchc.) K.W. Allred
Artemisia ludoviciana ssp. *incompta* (Nuttall) Keck
Aster occidentalis (Nuttall) Torrey & A. Gray var. *occidentalis*
Athyrium filix-femina var. *californicum* Butters
Athyrium filix-femina var. *cyclosorum* Ruprecht
Atriplex parishii S. Watson
Azolla mexicana C. Presl
Berberis pinnata Lagasca ssp. *pinnata*
Brodiaea elegans Hoover ssp. *elegans*
Brodiaea jolonensis Eastwood
Calystegia longipes (S. Watson) Brummitt
Calystegia sepium ssp. *limnophila* (E. Greene) Brummitt
Carex serratodens W. Boott
Castilleja campestris (Bentham) Chuang & Heckard ssp. *campestris*
Castilleja densiflora ssp. *gracilis* (Benth.) Chuang & Heckard
Caulanthus crassicaulis (Torrey) S. Watson var. *crassicaulis*
Centaurium muhlenbergii (Griseb.) W. Wright ex Piper
Centromadia fitchii (A. Gray) E. Greene
Cephalanthera austini (A. Gray) Heller
Chamaesyce serpyllifolia ssp. *hirtula* (S. Watson) Koutnik
Chenopodium littoreum Benet-Pierce & M.G. Simpson
Chorizanthe fimbriata Nuttall var. *fimbriata*
Chorizanthe obovata Goodman
Chorizanthe wheeleri S. Watson
Circaea alpina ssp. *pacifica* (Aschers. & Magnus) Raven
Cladium californicum (S. Watson) O'Neill
Clarkia similis Harlan Lewis & Ernst
Clematis pauciflora Nuttall

Collomia linearis Nuttall
Comarostaphylis diversifolia ssp. *planifolia* (Jeps.) G.D. Wallace
Corallorhiza maculata (Raf.) Raf.
Cornus nuttallii Audubon
Cornus sericea ssp. *occidentalis* (Torrey & A. Gray) Fosberg
Crassula solieri (C. Gay) F. Meigen

Common Name

Coastal or Yellow Sand-verbena Φ
Needlegrass Φ
Red Banberry Φ
Western Five-finger Fern or Maidenhair Φ
Nettleleaf Horsemint, Giant Hyssop Φ
Small-leaved Bentgrass Φ
Rough Bentgrass Φ
Iodine Bush Φ
Short-awn Foxtail Φ
Water Foxtail Φ
White Bur-sage, Burro Bush, Burro-Weed Φ
Elegant Fiddleneck Φ
Pearly Everlasting Φ
Pioneer Rock Cress Φ
Nealley Three-awn Grass Φ
Parish Three-awn Grass Φ
White Sagebrush Φ
Western Mountain Aster Φ
Southwestern Lady Fern Φ
Northwestern Lady Fern Φ
Parish Brittlescale Φ
Mexican Duckweed Fern Φ
Pinnate-leaved Barberry Φ
Elegant Brodiaea Φ
Dwarf Brodiaea Φ
Morning-glory Φ
Riparian Morning-glory Φ
Sawtooth Sedge Φ
Field Owl's Clover Φ
Slender Dense-flowered Owl's Clover Φ
Thick-stem Wild Cabbage Φ
Monterey Centaury Φ
Fitch Spikeweed Φ
Phantom Orchid Φ
Hairy Thyme-leaved Spurge Φ
Coastal Goosefoot Φ
Fringed Spineflower (R) – Newhall Ranch
Obovate Spineflower Φ
Wheeler Spineflower Φ
Enchanter's Nightshade Φ
Saw-grass Φ
Copy-cat Clarkia Φ
Ropevine Φ
Narrow-leaved Collomia Φ
Simpleleaf Summer Holly Φ
Spotted Coral Root Φ
Mountain Dogwood Φ
Western American Dogwood Φ
Solier Vernal Pool Water Pigmy-weed Φ

¹¹ Taxa that are expected to occur within Ventura County but for which no vouchers have been collected or observed. If any of these taxa are found within Ventura County, they should be considered locally rare species. Plants with a "Φ" following the common name lack vouchers from Ventura County at the following herbaria (CHSC, DAV, IRVC, JEPS, POM, RSA, SBBG, SD, SJSU, UC, UCI, UCR, UCSB, USSC).

Scientific Name

Cuscuta californica var. *papillosa* Yuncker
Cyperus niger Ruiz Lopez & Pavon
Damasonium californicum Benth
Deschampsia elongata (Hooker) Benth
Descurainia incisa (A. Gray) Britton ssp. *incisa*
Dodecatheon clevelandii E. Greene ssp. *clevelandii*
Elatine rubella Rydb.
Eleocharis parvula (Roemer & Schultes) Link
Epilobium halleanum Hausskn.
Epilobium minutum Lindl. ex. Lehm.
Eremalche parryi ssp. *kernensis* (C. Wolf) D. Bates
Erigeron philadelphicus L.
Eriophyllum ambiguum (A. Gray) A. Gray var. *ambiguum*
Eriophyllum lanatum var. *hallii* Constance
Eschscholzia lemmonii ssp. *kernensis* (Munz) C. Clark
Eustoma exaltatum (L.) Don
Euphorbia crenulata Engelm
Fraxinus latifolia Benth
Galium californicum ssp. *flaccidum* (E. Greene) Dempster & Stebb.
Gayophytum humile A.L. Juss.
Gayophytum oligospermum H. Lewis & J. Szweykowski
Geranium carolinianum L.
Geranium richardsonii Fischer & Trautv.
Gilia tricolor Benth ssp. *tricolor*
Glyptopleura marginata D. Eaton
Grayia polygaloides Hooker & Arnott
Helianthus californicus DC.
Hesperolinon micranthum (A. Gray) Small
Hesperomecon linearis (Benth) E. Greene
Hordeum jubatum L.
Hydrocotyle ranunculoides L.f.
Hydrocotyle umbellata L.
Hymenoclea monogyra Torrey & Gray
Hymenoclea salsola var. *pentalepis* (Rydb.) L. Benson
Iris douglasiana Herbert in W.J. Hooker and G.A.W. Arnott
Isoetes orcuttii A.A. Eaton
Juncus bryoides F.J. Hermann
Juncus falcatus E. Meyer var. *falcatus*
Juncus orthophyllus Cov.
Lasthenia fremontii (A. Gray) E. Greene
Lasthenia glaberrima A. DC.
Lasthenia microglossa (A. DC.) E. Greene
Layia hieracioides (DC.) Hooker & Arnott
Lepidium latipes Hooker var. *latipes*
Lilaea scilloides (Poir.) Haum.
Lonicera hispidula var. *vacillans* A. Gray
Lonicera interrupta Benth. X *Lonicera hispidula* var. *vacillans* Gray
Luzula comosa E. Meyer
Luzula subsessilis (S. Watson) Buchenau
Mimulus palmeri A. Gray
Minuartia californica (A. Gray) Mattf.
Monardella australis Abrams
Monardella villosa ssp. *obispoensis* (Hoover) Jokerst
Najas marina L.
Nemophila parviflora var. *quercifolia* (Eastw.) Chandler
Opuntia phaeacantha Engelm.

Common Name

California Dodder Φ
Black Flatsedge Φ
Fringed Water-Plantain Φ
Slender Hairgrass Φ
Richardson Tansy Mustard Φ
Cleveland Shooting Star Φ
Waterwort Φ
Colorado Spike-rush Φ
Gland Willowherb Φ
Chaparral Willowherb Φ
Kern Mallow Φ
Philadelphia Fleabane Φ
Ambiguous Woolly Daisy Φ
Fort Tejon Yarrow Φ
Tejon Poppy Φ
Catchfly Gentian Φ
Chinese Caps Φ
Oregon Ash Φ
California Bedstraw Φ
Low Gayophytum Φ
Southern California Mountain Gayophytum Φ
Cransebill, Carolina Geranium Φ
Mountain Geranium Φ
Birds-eye or Tricolor Gilia Φ
Sculpted-fruit Φ
Hop-Sage Φ
California Sunflower Φ
Dwarf Flax Φ
Western Poppy Φ
Foxtail Barley Φ
False-crowfoot Pennywort Φ
Marsh Pennywort Φ
Leafy Burrobrush Φ
Southern Burrobrush Φ
Mountain Iris Φ
Orcutt Quillwort Φ
Moss Rush Φ
Sickleleaf Rush Φ
Straight-leaf Rush Φ
Fremont Goldfields Φ
Rayless or Smooth Goldfields Φ
Small-rayed Goldfields Φ
Tall Layia Φ
Dwarf Peppergrass Φ
Flowering Quillwort Φ
California Honeysuckle Φ
Chaparral Honeysuckle hybrid Φ
Wood Rush Φ
Wood Rush Φ
Palmer Monkeyflower Φ
California Sandwort Φ
Southern Coyote Mint Φ
San Luis Obispo Coyote Mint Φ
Spiny Naiad Φ
Oak-leaved Nemophila (R)
Engelmann Prickly Pear Φ

Scientific Name

Orthocarpus linearilobus Benth
Osmorhiza chilensis Hooker & Arnott
Panicum acuminatum Sw. var. *acuminatum*
Parnassia californica (A. Gray) E. Greene
Penstemon spectabilis Thurber var. [ssp.] *spectabilis*
Penstemon spectabilis var. [ssp.] *subviscosus* (Keck) McMinn
Phacelia congdonii Greene
Phoradendron libocedri (Engelm.) Howell
Physalis acutifolia (Miers) Sandw.
Plagiobothrys collinus var. *californicus* (A. Gray) Higgins
Plectritis brachystemon Fischer & C. Meyer
Pogogyne zizyphoroides Benth
Polygonum amphibium var. *stipulaceum* Coleman
Polygonum douglasii E. Greene ssp. *douglasii*
Quercus garryana var. *breweri* (Engelm.) Jeps.
Ranunculus aquatilis var. *capillaceus* (Thuill.) DC.
Rubus leucodermis var. *bernardinus* (E. Greene) Jepson
Rubus parviflorus Nuttall
Sagittaria calycina Englemann
Sagittaria latifolia Willd.
Salix sitchensis Bong.
Sanicula hoffmannii (Munz) Stan & Constance
Scutellaria bolanderi ssp. *austromontana* Epling
Senecio californicus DC.
Spirodela polyrrhiza (L.) Schlied.
Spirodela punctata C. Thompson
Sporobolus airoides Torrey
Streptanthella longirostris Rydb.
Thelypteris puberula var. *sonorensis* A.R. Smith
Thermopsis macrophylla Hook. & Arn. var. *macrophylla*
Trichostema parishii Vasey
Triteleia dudleyi Hoover
Triteleia hyacinthina (Lindley) E. Greene
Triteleia ixiooides ssp. *scabra* (E. Greene) L. Lenz
Triteleia laxa Benth
Utricularia vulgaris L.
Vaccinium ovatum Pursh
Viola sheltonii Torrey
Wolffia borealis Landolt & O. Wildi
Wolffia columbiana Karsten
Wolffia globosa Hartog & Plas
Wolffiella lingulata Hegelm.
Wolffiella oblonga (Phil.) Hegelm.
Wyethia ovata T. & G.
Yucca brevifolia var. *herbertii* (J.M. Webber) Munz

Common Name

Pallid Owl's Clover Φ
Mountain Sweetroot or Sweet Cicely Φ
Panicgrass Φ
Grass-of-Parnassus Φ
Royal Penstemon Φ
Sticky Royal Penstemon Φ
Congdon Phacelia Φ
Incense-cedar Mistletoe Φ
Ground-cherry Φ
California Popcornflower Φ
Small-flowered Pink Plectritis Φ
Sacramento Mesamint Φ
Stipuled Water-Smartweed Φ
Douglas Knotweed Φ
Brewer Oregon Oak Φ
Slender White Water Crowfoot Φ
Sticky Blackcap Raspberry Φ
Thimbleberry Φ
Hooded Arrowhead Φ
Broadleaf Arrowhead Φ
Sitka Willow Φ
Hoffmann's Sanicle Φ
Southern Skullcap Φ
California Ragwort
Duckmeat Φ
Duckmeat Φ
Alkali Sacaton Φ
Dwarf Jewelflower Φ
Sonoran Maiden Fern Φ
False-Lupine Φ
Parish Bluecurls Φ
Dudley Tritelia Φ
White Tritelia Φ
Golden Brodiaea Φ
Ithuriel Spear Φ
Bladderwort Φ
California Huckleberry Φ
Shelton Violet Φ
Water-meal Φ
Coastal Water-meal Φ
Globe Water-meal Φ
Mud-midget Φ
Oblong Water-meal Φ
Mule-ears Φ
Herbert Joshua Tree Φ

Plants Recently Removed from List

Below is a list of taxa that were previously included on this list, but removed after the eleventh (presumed) extant population was found (through either direct field surveys or searches of herbaria records), or there was a taxonomic change that warranted deletion of the taxon from this list. Only those taxa removed from the current edition are listed below. Consult earlier editions of this checklist for taxa removed from earlier editions.

Scientific Name

Agoseris heterophylla var. *cryptopleura* Greene
Amsinckia menziesii (Lehm.) Nelson & J.F. Macbr. var. *menziesii*
Aspidotis californica (Hooker) Nuttall ex Copeland
Cryptantha echinella E. Greene
Cryptantha microstachys (A. Gray) E. Greene
Cryptantha nemaclada E. Greene
Cryptantha nevadensis A. Nelson & Kennedy var. *nevadensis*
Cryptantha oxygona (A. Gray) E. Greene
Cryptantha simulans E. Greene
Eragrostis mexicana (Hornem.) Link ssp. *mexicana*
Eriogonum heermannii Durand & Hilg. var. *heermannii*
Eriogonum maculatum A.A. Heller
Eriogonum nudum var. *pubiflorum* Benth.
Eriogonum nudum var. *westonii* (S. Stokes) J.T. Howell
Eriogonum roseum Durand & Hilg.
Eriogonum saxatile S. Watson
Eriogonum trichopes Torrey var. *trichopes*
Gayophytum diffusum ssp. *parviflorum* H. Lewis & J. Szweykowski
Gilia splendens H. Mason & A. Grant ssp. *splendens*
Lagophylla ramosissima Nutt. ssp. *ramosissima*
Ludwigia peploides (Kunth) Raven ssp. *peploides*
Malvella leprosa (Ortega) Krapov
Melica stricta Bolander var. *stricta*
Monardella breweri Gray
Nama californicum (Gray) J.D. Bacon
Orobancha bulbosa (Gray) G. Beck
Orobancha fasciculata Nuttall
Penstemon speciosus Lindley
Potentilla glandulosa Lindley ssp. *glandulosa*
Sidalcea malviflora ssp. *californica* (T. & G.) C.L. Hitchc.
Solidago confinis Gray

Common Name

Mountain Dandelion (U)
Common or Menzeis Fiddleneck (U)
California Lace Fern (U)
Prickly Forget-Me-Not (U)
Tejon Forget-Me-Not (U)
Colusa Forget-Me-Not (U)
Nevada Forget-Me-Not (R)
Sharp-not Forget-Me-Not (R)
Pine Forget-Me-Not (U)
Mexican Lovegrass (R)
Heerman Buckwheat (U)
Spotted Buckwheat (U)
Hairy-flowered Barestem Buckwheat (U)
Weston Barestem Buckwheat (U)
Rose Buckwheat (U)
Rock Buckwheat (U)
Little Trumpet (U)
Diffuse Gayophytum (U)
Splendid Gilia (U)
Branched Lagophylla, Common Hareleaf (U)
Floating Seedbox (U)
Alkali-mallow, White-Weed (U)
Nodding or Rock Melic Grass (R)
Brewer Coyote Mint (U)
Lemmon California Waterleaf (U)
Chamise Broom-rape (U)
Clustered Broom-rape (U)
Showy Beardtongue (R)
Sticky Cinqufoil (U)
California Globemallow (U)
Southern Goldenrod (U)